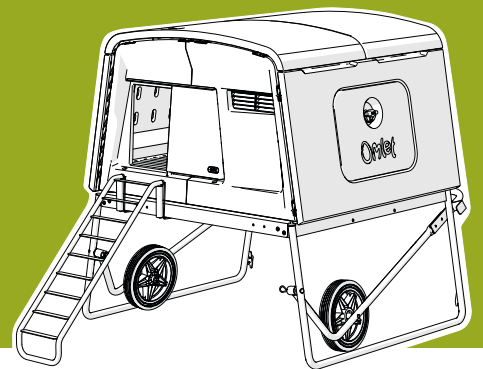


Omlet®



eglu[®]
cube

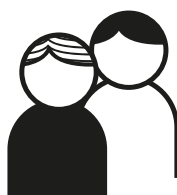
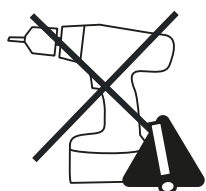
Watch the 'How to Build' video now
www.omlet.co.uk/how_to_build





United Kingdom	01295 500900	hello@omlet.co.uk	www.omlet.co.uk
United States	646-434-1104	info@omlet.us	www.omlet.us
Australia	02 8103 4124	info@omlet.com.au	www.omlet.com.au
Ireland	01 513 7973	hello@omlet.co.uk	www.omlet.ie
Deutschland	0451 8118 9058	hallo@omlet.de	www.omlet.de
Austria	0720 115240	hallo@omlet.de	www.omlet.de
France	04 11 92 12 80	info@omlet.fr	www.omlet.fr
Nederland	085 888 3571	vragen@omlet.nl	www.omlet.nl
Belgium FR	02 808 85 07	info@omlet.fr	www.omlet.fr
Belgium NL	09 298 04 69	vragen@omlet.nl	www.omlet.nl
Switzerland DE	022 518 24 59	hallo@omlet.de	www.omlet.de
Switzerland FR	021 588 14 88	info@omlet.fr	www.omlet.fr
Italia	0294 752010	info@omlet.it	www.omlet.it
España	0932 201 199	info@omlet.es	www.omlet.es
Sverige	084468 6558	hej@omlet.se	www.omlet.se
Danmark	89 87 06 83	info@omlet.dk	www.omlet.dk
Norge	08 4468 6558	hei@omlet.no	www.omlet.no
Polska	22 307 01 69	czesc@omlet.com.pl	www.omlet.com.pl

You will need...

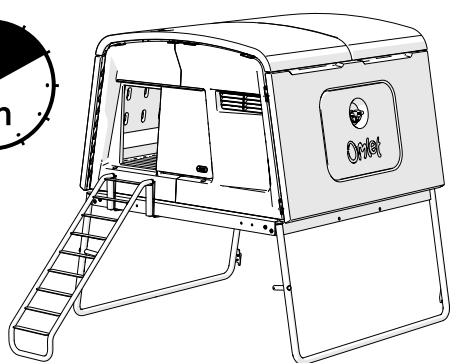
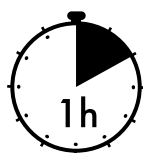


EN

Important Information! Please read before use

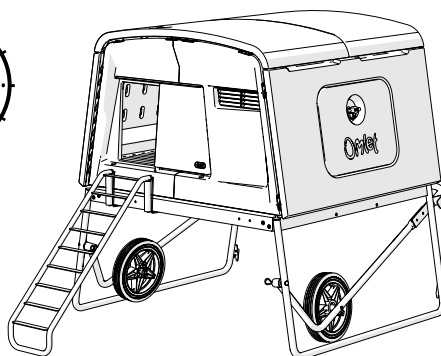
Do regularly maintain products. Some components are made from metal and the coating may need maintenance over time. We recommend regularly rinsing with potable water, especially if you live in an area that is coastal. If rust spots do develop, repair the area. If unsure how to do this, seek professional advice. Check your clips regularly for damage or fatigue. Compromised clips will affect the integrity of your run. You can buy spare clips on our website.

Eglu Cube Assembly Configurations:



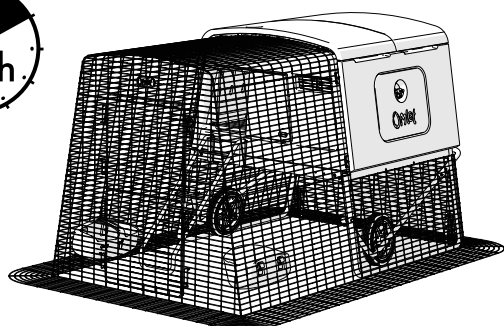
Eglu Cube and Frame

Box: A, B, and C



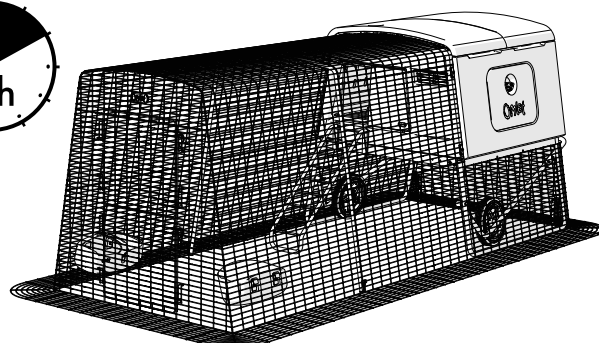
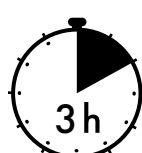
Eglu Cube, Frame and Wheels

Box: A, B, C and E



Eglu Cube, Frame, Wheels and 2m Run

Box: A, B, C, D, and E

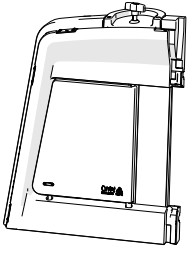


Eglu Cube, Frame, Wheels and 3m Run

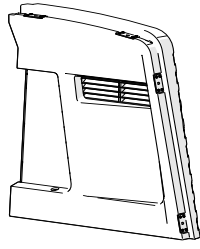
Box: A, B, C, D, E, and F

What you have received

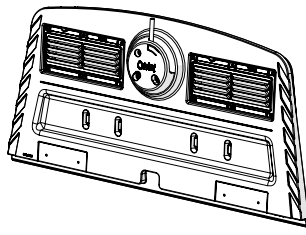
064.0085: Boxed House A Assembly SF



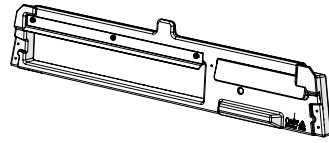
Front Panel Right Assembly
064.0083
x1



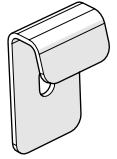
Front Panel Left Assembly
064.0082
x1



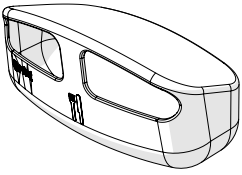
Back Door with Lock
064.0108
x1



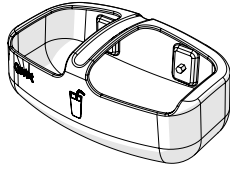
Back Bar
064.0007
x1



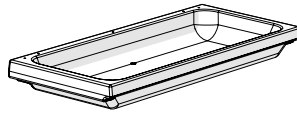
Feeder Drinker Hook
810.0183
x4



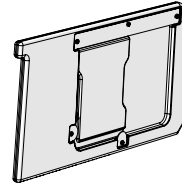
Feeder
064.1040
x1



Drinker
064.1041
x1



Nesting Box
064.1011
x1

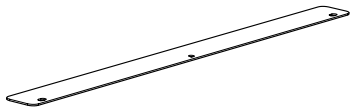


Nest Box Partition
064.0011
x1

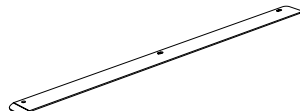


M6x10mm Screw
800.0240
x4

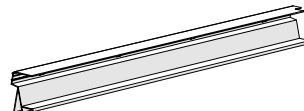
064.0088: Boxed Runners Box A SF



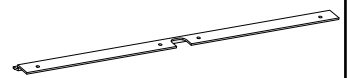
Roosting Rack Support
064.1047
x1



Droppings Tray Support
064.1142
x1



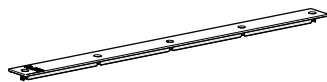
Extrusion
064.1101
x1



Water Run-off Front Panel
810.1138
x1

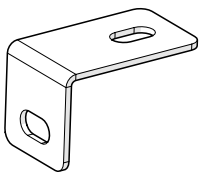


Front Panel Insert Front
810.1182
x1

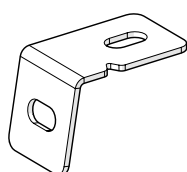


Front Panel Insert Back
810.1183
x1

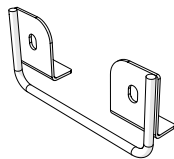
064.0087: Fixings Pack SF



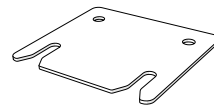
Side to Front Panel Bracket
064.1017
x4



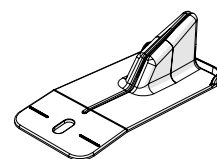
Side to Roof Panel Bracket
064.1023
x6



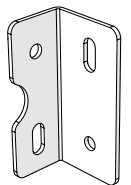
Back Door U Bracket
064.1028
x2



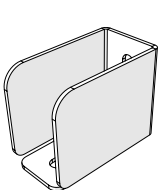
Roof Joint Bracket
064.1155
x1



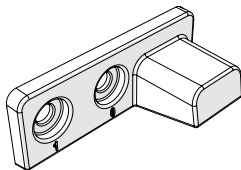
Tray Locking Clip
064.1043
x1



Back Bar Bracket
064.1099
x2



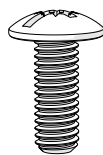
Partition Bracket
064.1103
x2



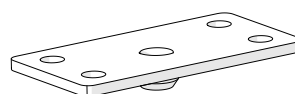
Locator Block
064.1143
x1



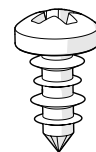
M6x10mm Screw
800.0240
x56



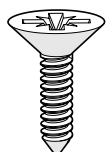
M6x16mm Screw
800.0241
x2



Bracket Threaded
064.1016
x3

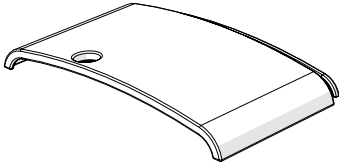


Self Tapping Screw
Pozi Pan
4x8mm
800.0184
x16

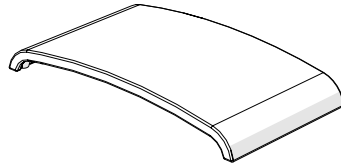


Self-tapping Plastite
Screw Countersunk
3x9mm
800.0450
x5

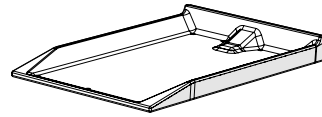
064.0086: Boxed House B Assembly SF



Roof Panel Front
064.1003
x1



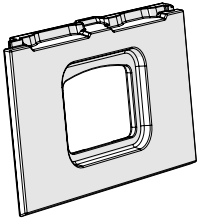
Roof Panel Rear
064.0014
x1



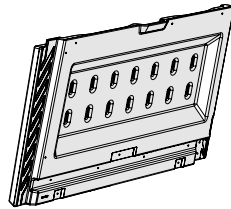
Droppings Tray
064.1010
x1



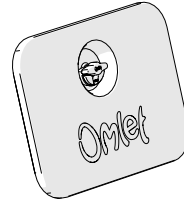
Roosting Bars
064.1012
x1



Left Side Panel
064.1001
x1

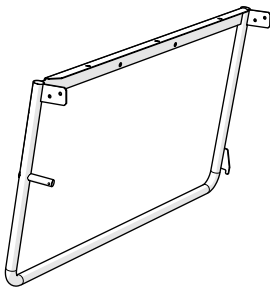


Right Side Panel
064.1002
x1

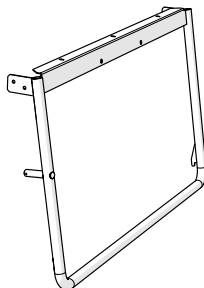


Egg Port with Lock
064.0112
x1

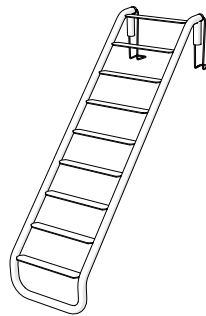
064.0045: Eglu Cube Frame Assembly Box C



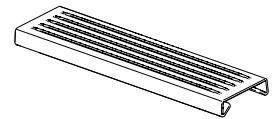
Frame Right Side
064.0027
x1



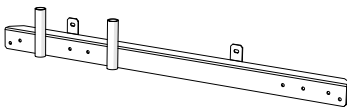
Frame Left Side
064.0026
x1



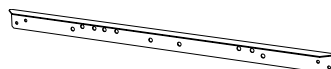
Frame Ladder
064.0030
x1



Ladder Grip
810.1041
x9

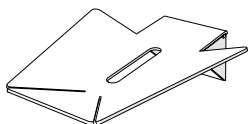


Frame Front Brace
064.0028
x1

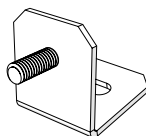


Frame Rear Brace
064.1056
x1

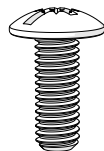
064.0037: Fixings Pack Box C



Clip Cover
064.1162
x1



Side Panel to Frame Bracket
064.1022
x4



M6x16mm Screw
800.0241
x11



M6x10mm Screw
800.0240
x7



Wing Nut
800.0040
x15

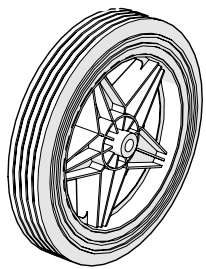


Alignment Plug
064.1163
x2

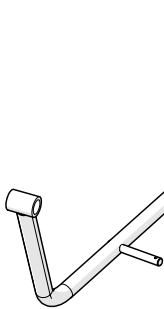


Self Tapping Screw
800.0002
x4

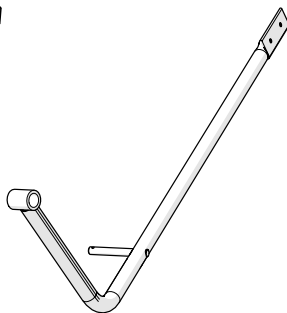
064.0047: Wheels Assembly Box E



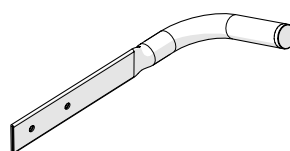
Wheel
064.1015
x2



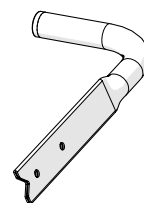
Right Wheel Arm
064.0041
x1



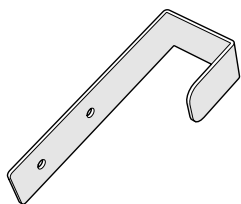
Left Wheel Arm
064.0043
x1



Right Foot Pedal
064.0068
x1

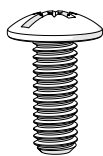


Left Foot Pedal
064.0069
x1

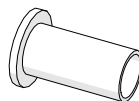


Wheel Arm
Retaining Bracket
064.1170
x2

064.0038: Fixings Pack



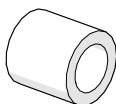
M6x16mm Screw
800.0241
x4



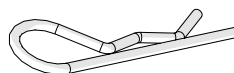
Nylon Bearing
800.0112
x2



Wing Nut
800.0040
x4

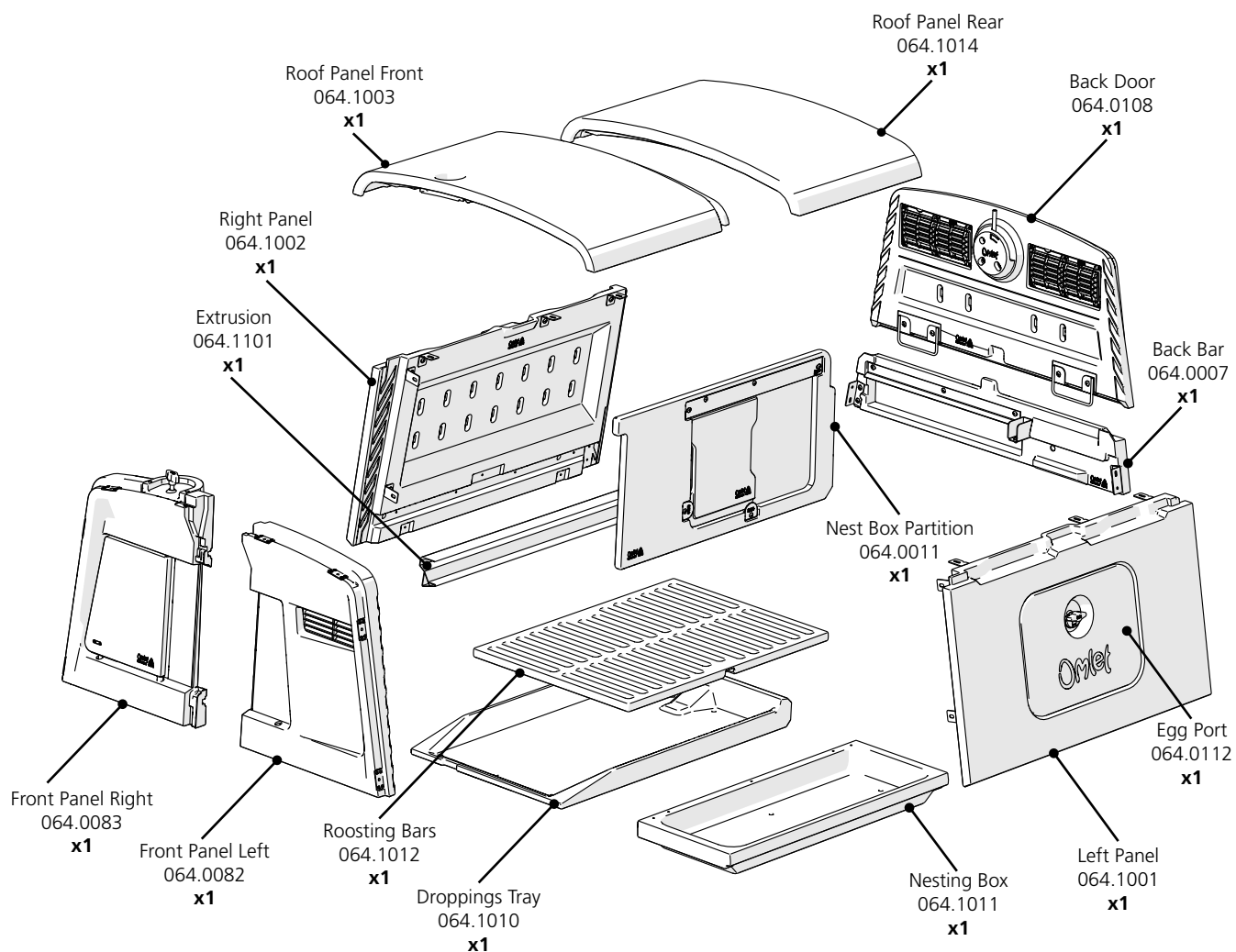


Nylon Spacer
800.0102
x2

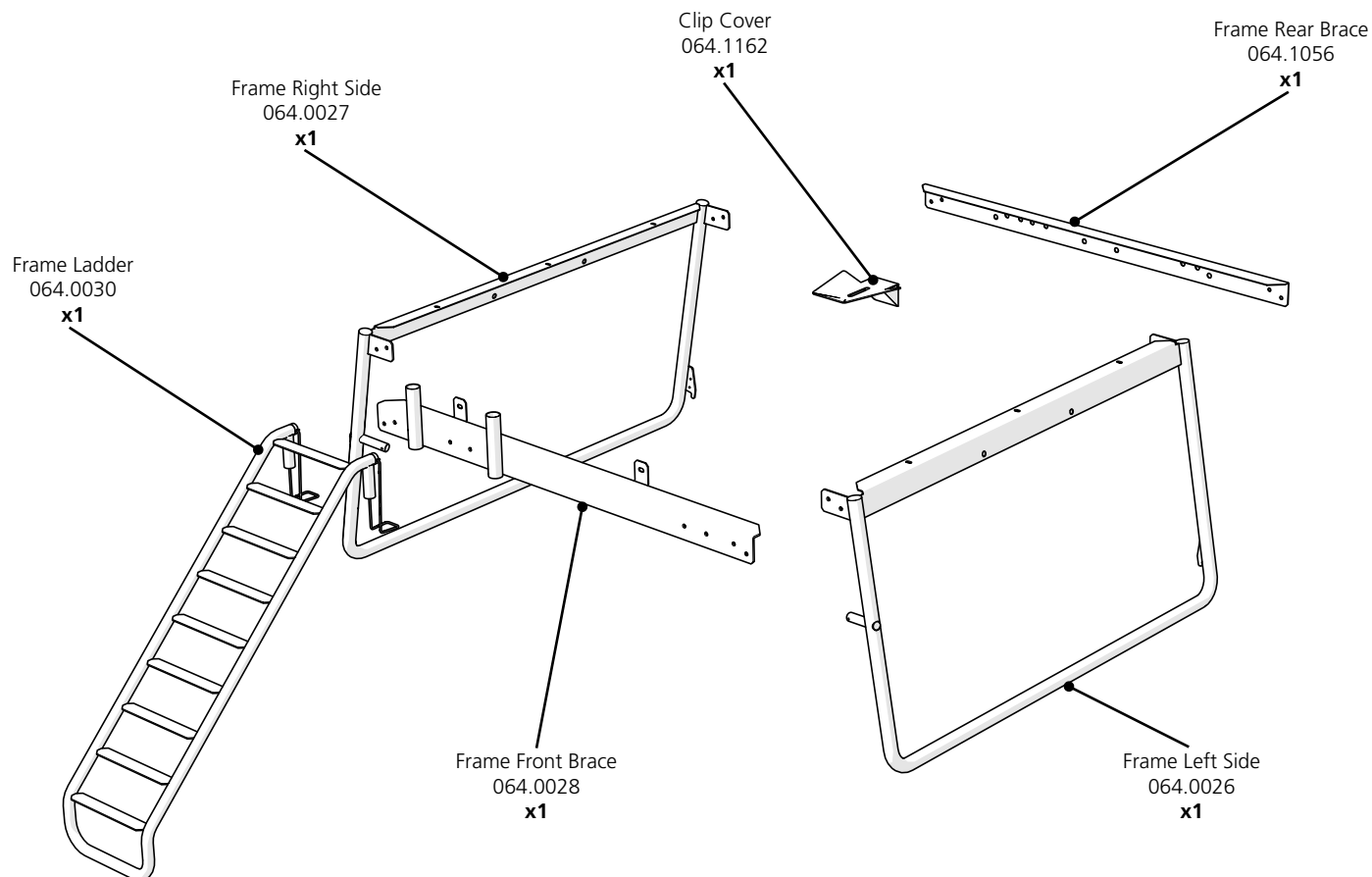


R-Clip
800.0101
x4

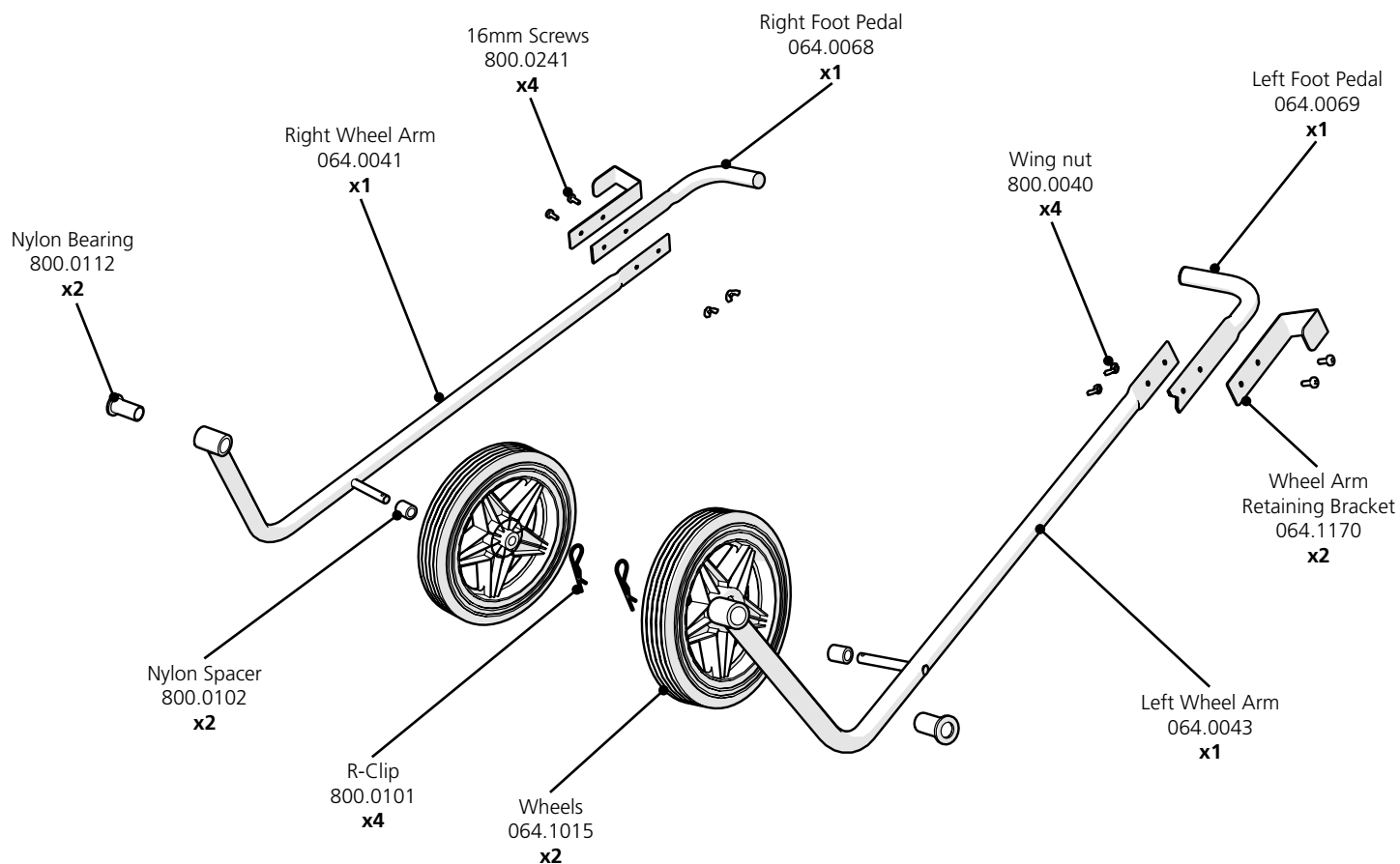
Eglu Cube Exploded Assembly

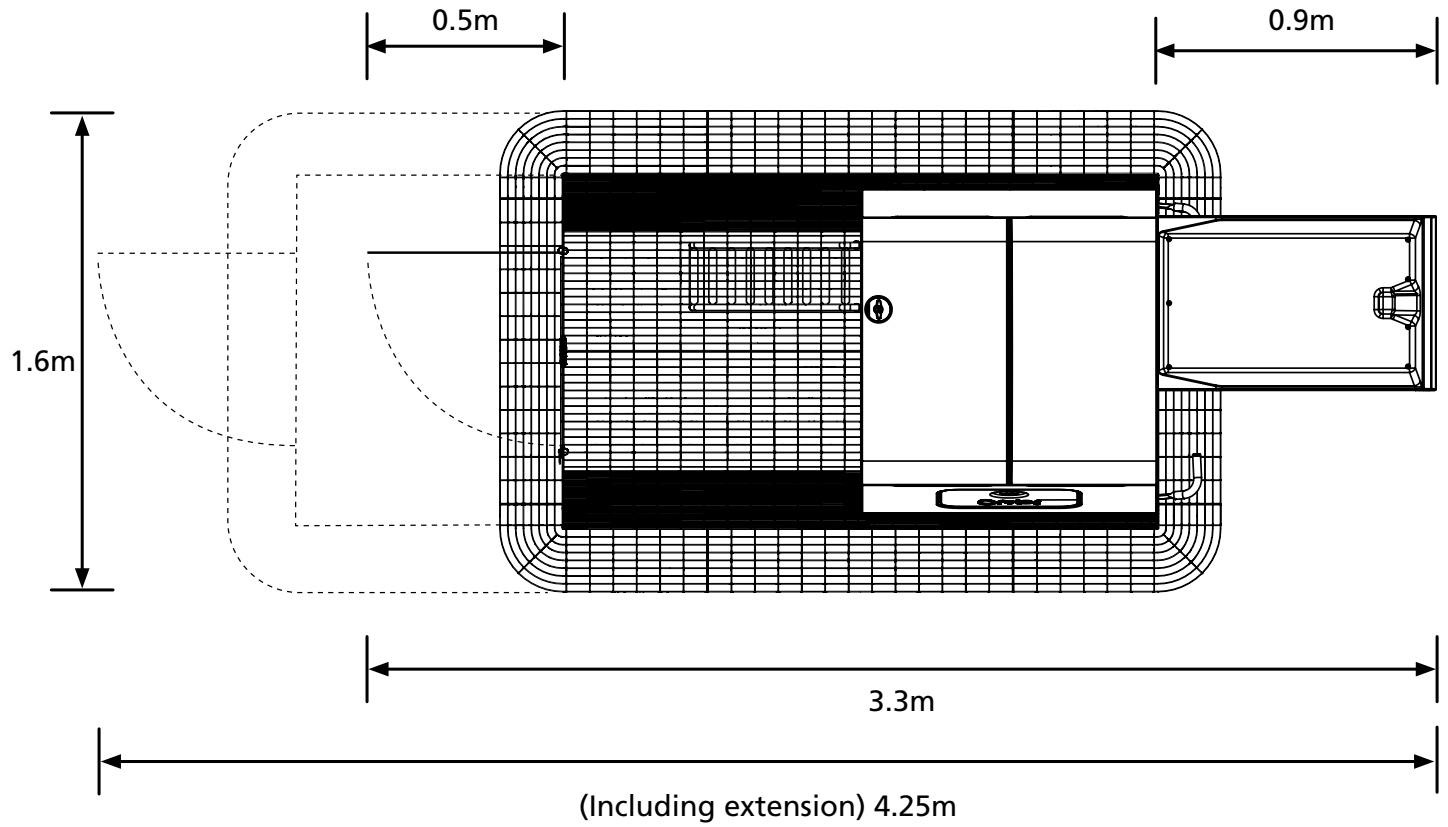
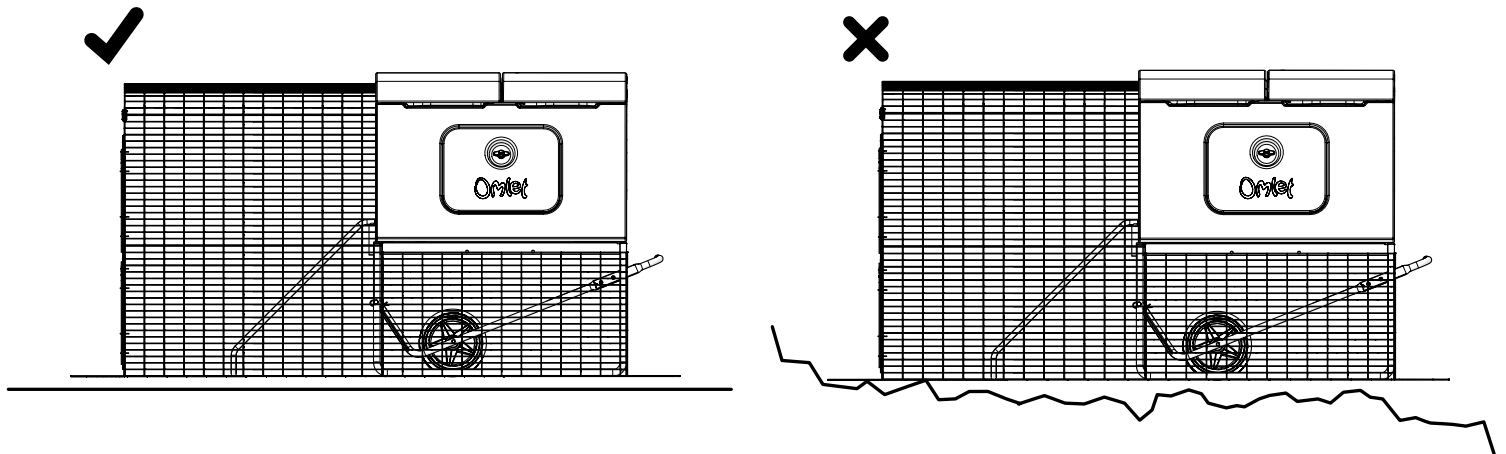


Frame Exploded Assembly

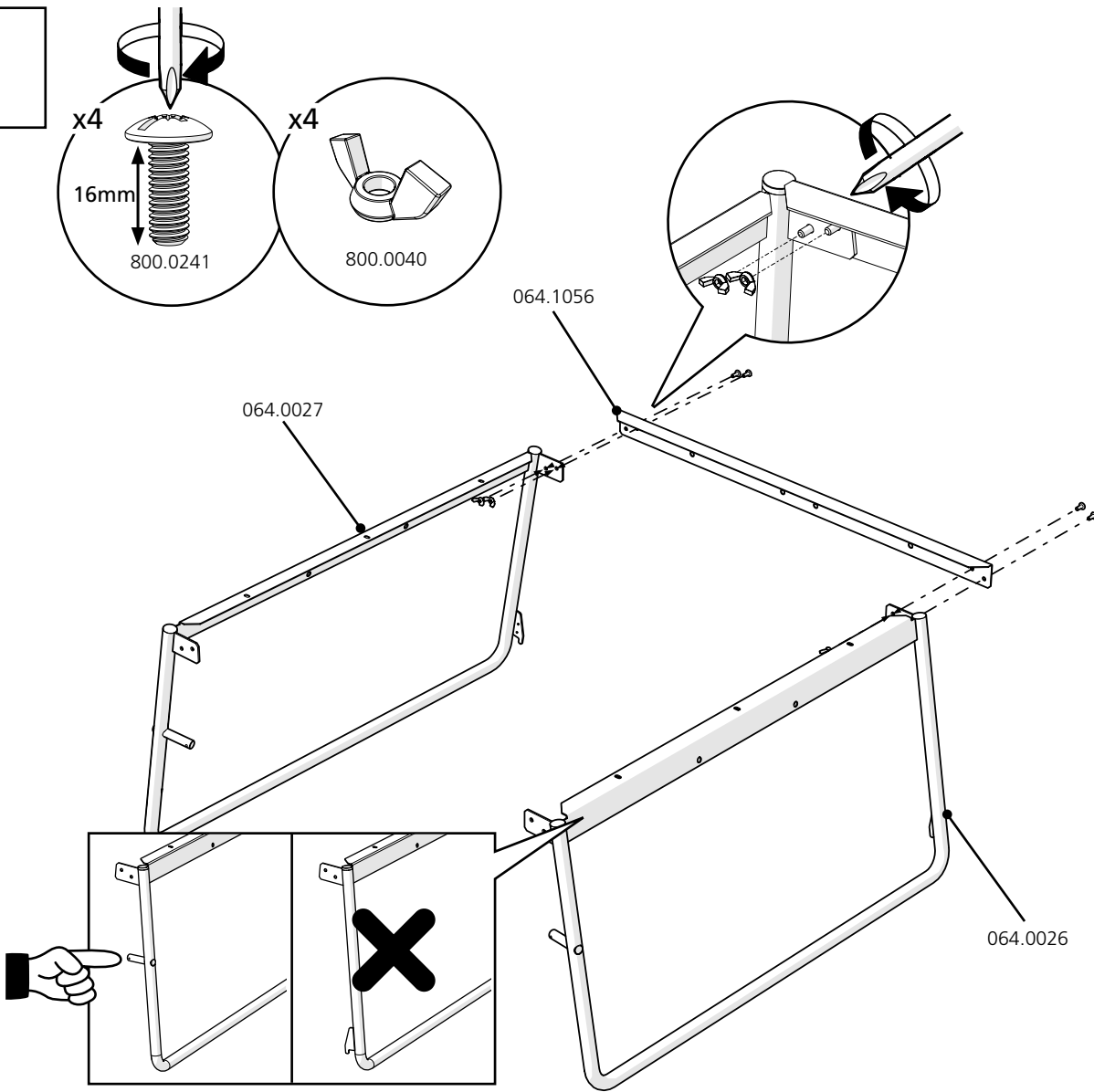


Wheels Exploded Assembly

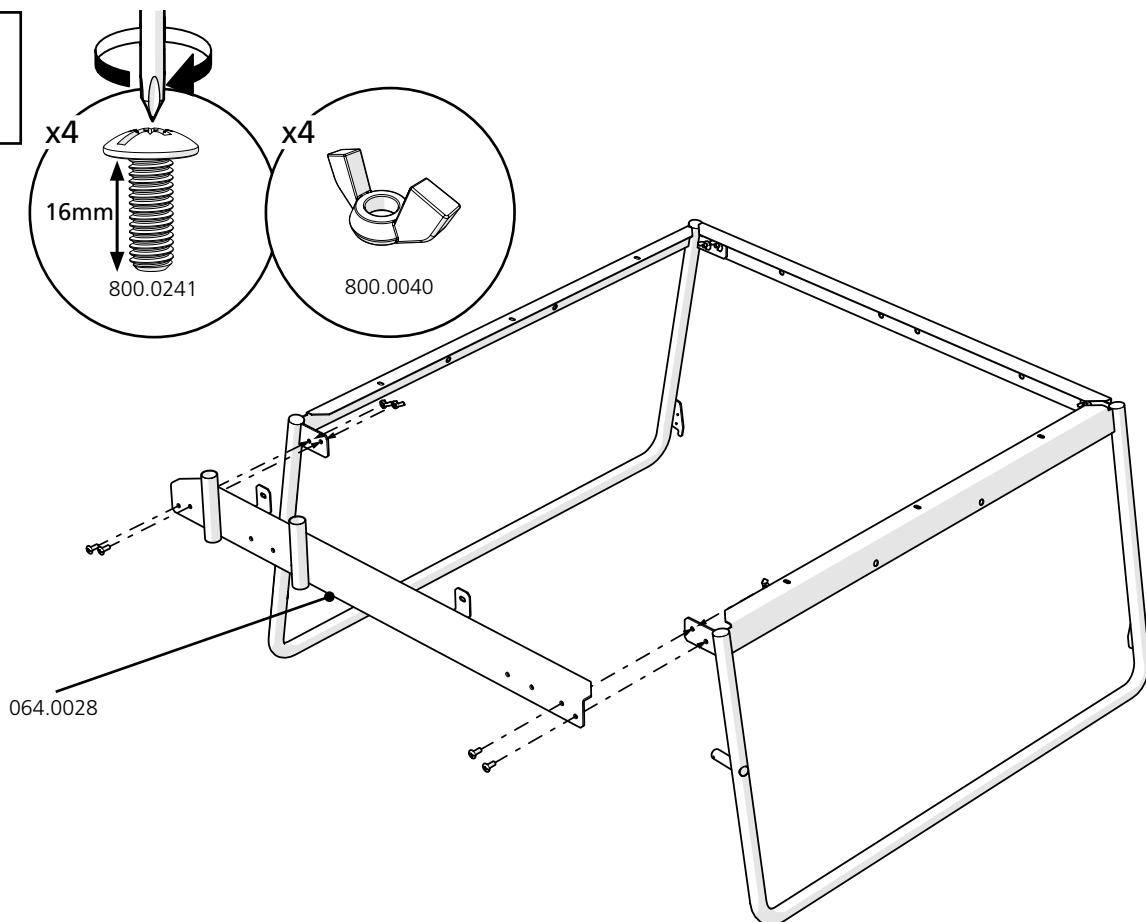




1

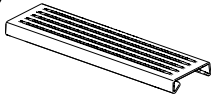


2



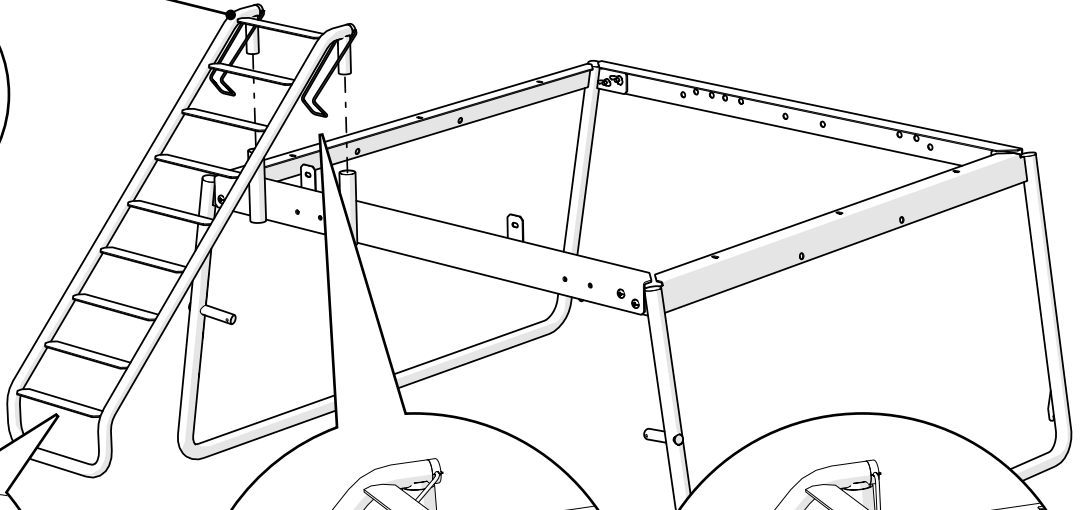
3

x9

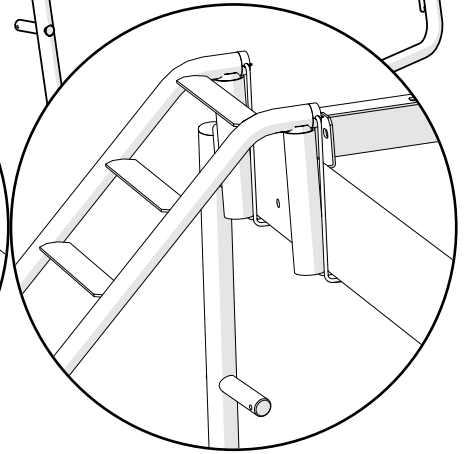
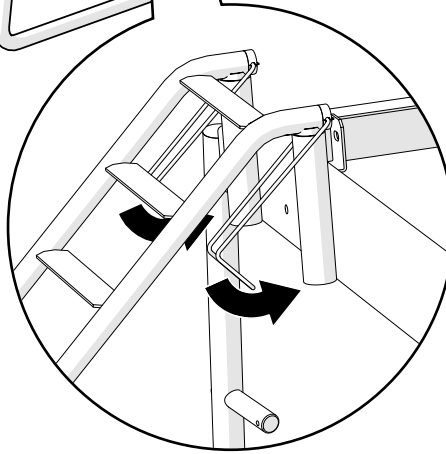
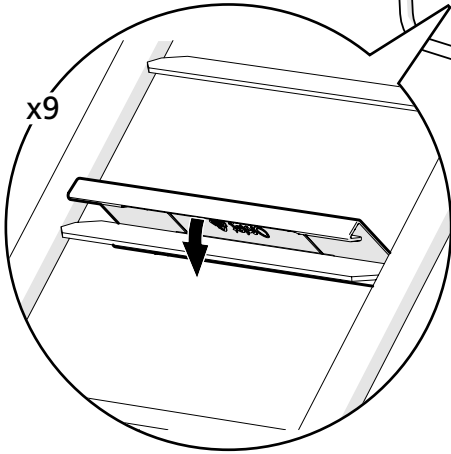


810.1041

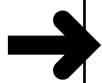
064.0030



x9

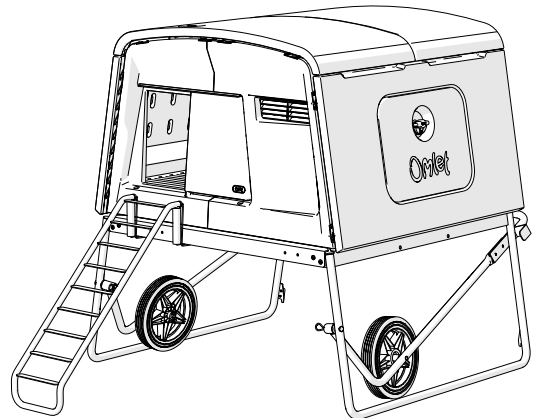


No Wheels:



step

7



Wheels:

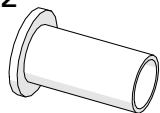


step

4

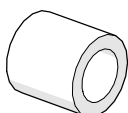
4

x2



800.0112

x2



800.0102

x2

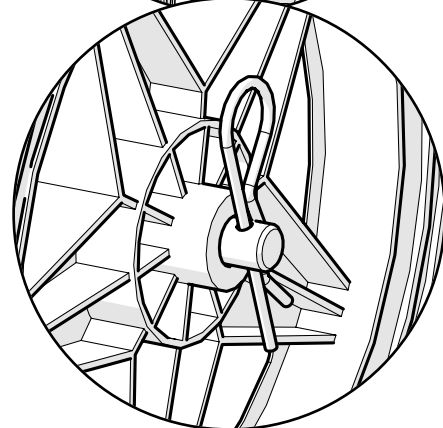
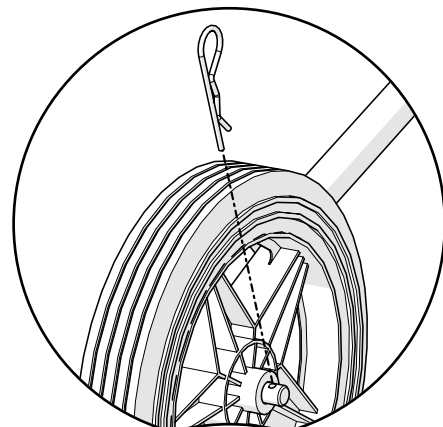


800.0101

064.0041

810.1015
x2

064.0043

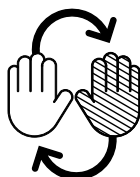


5

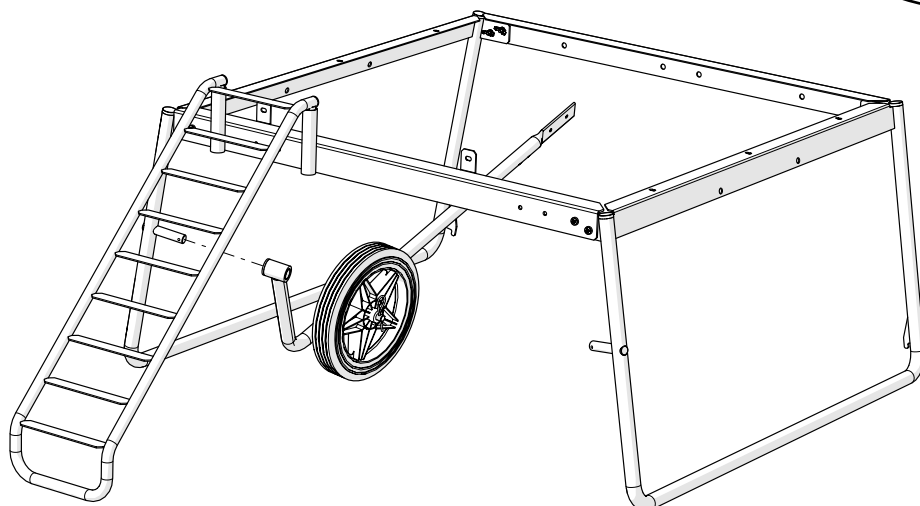
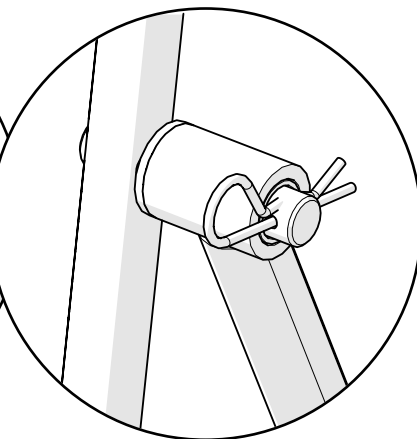
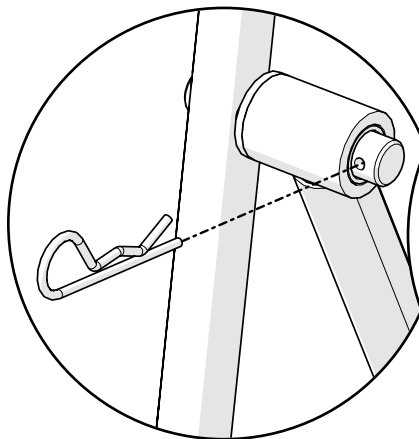
x2



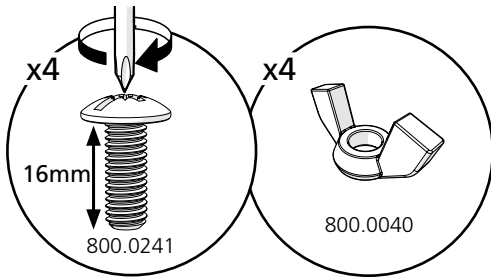
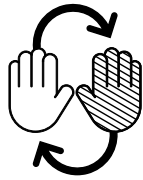
800.0101



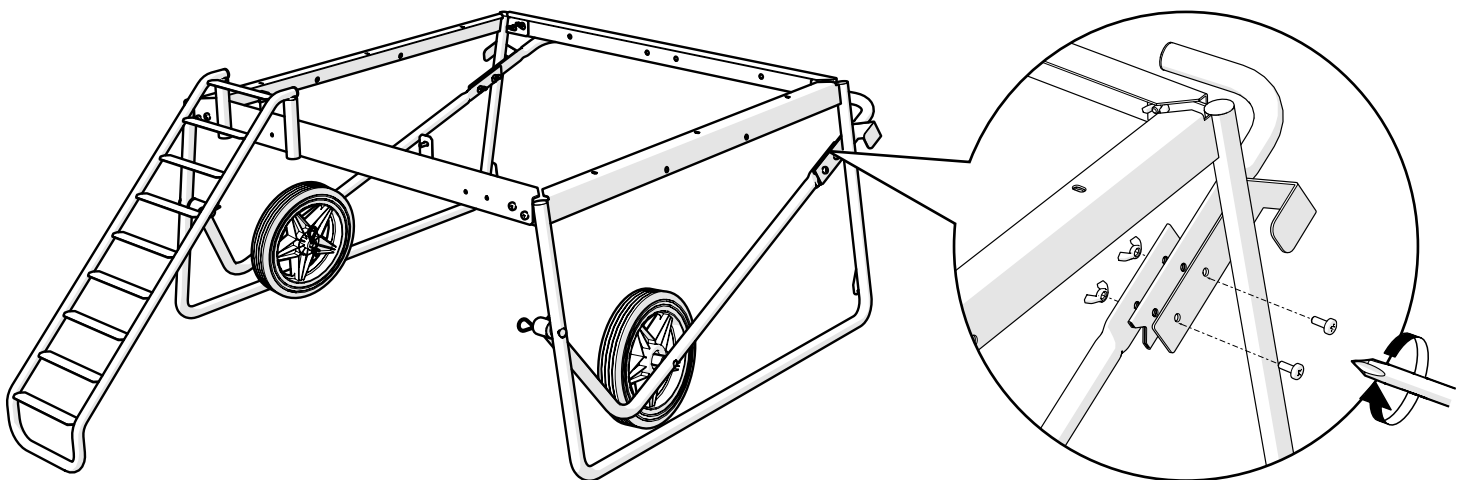
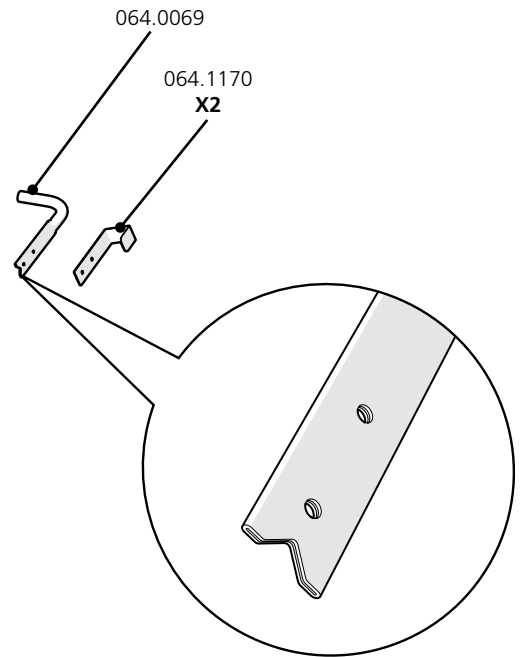
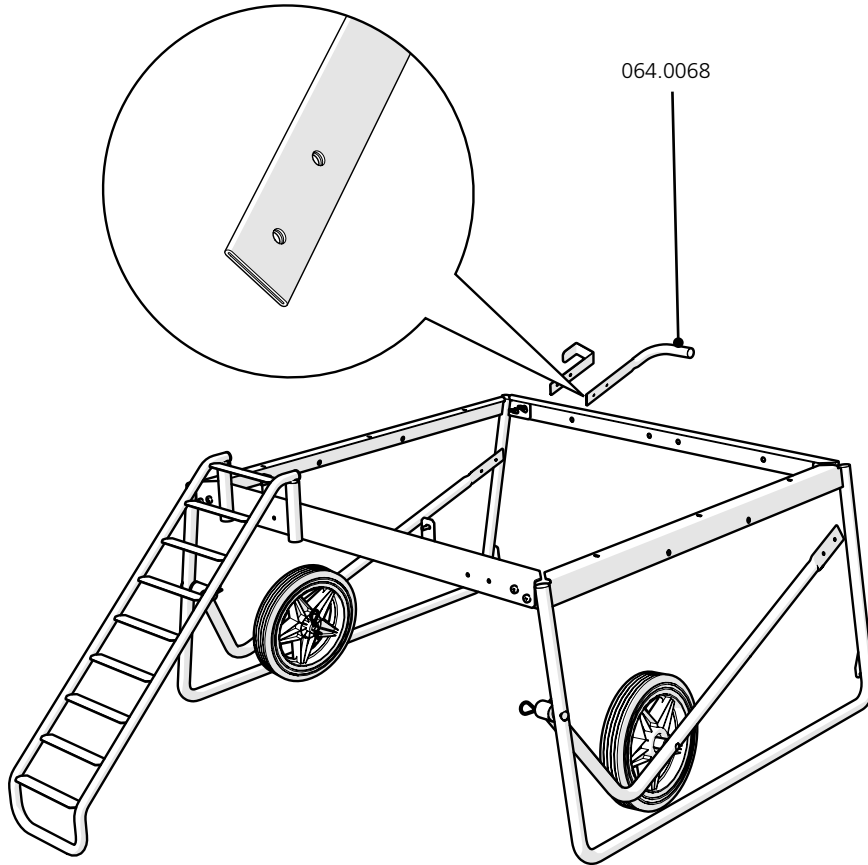
Repeat on other side



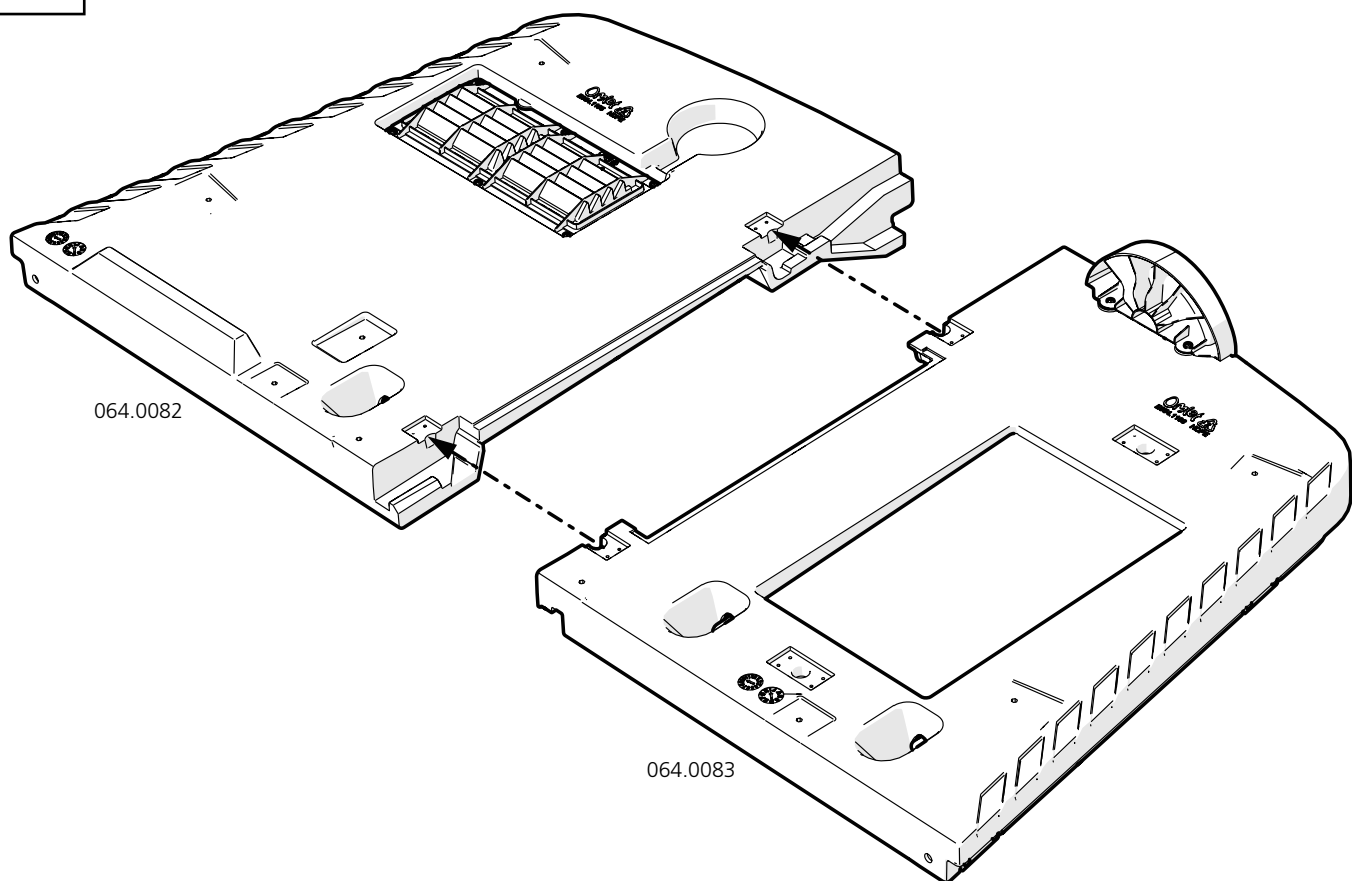
6



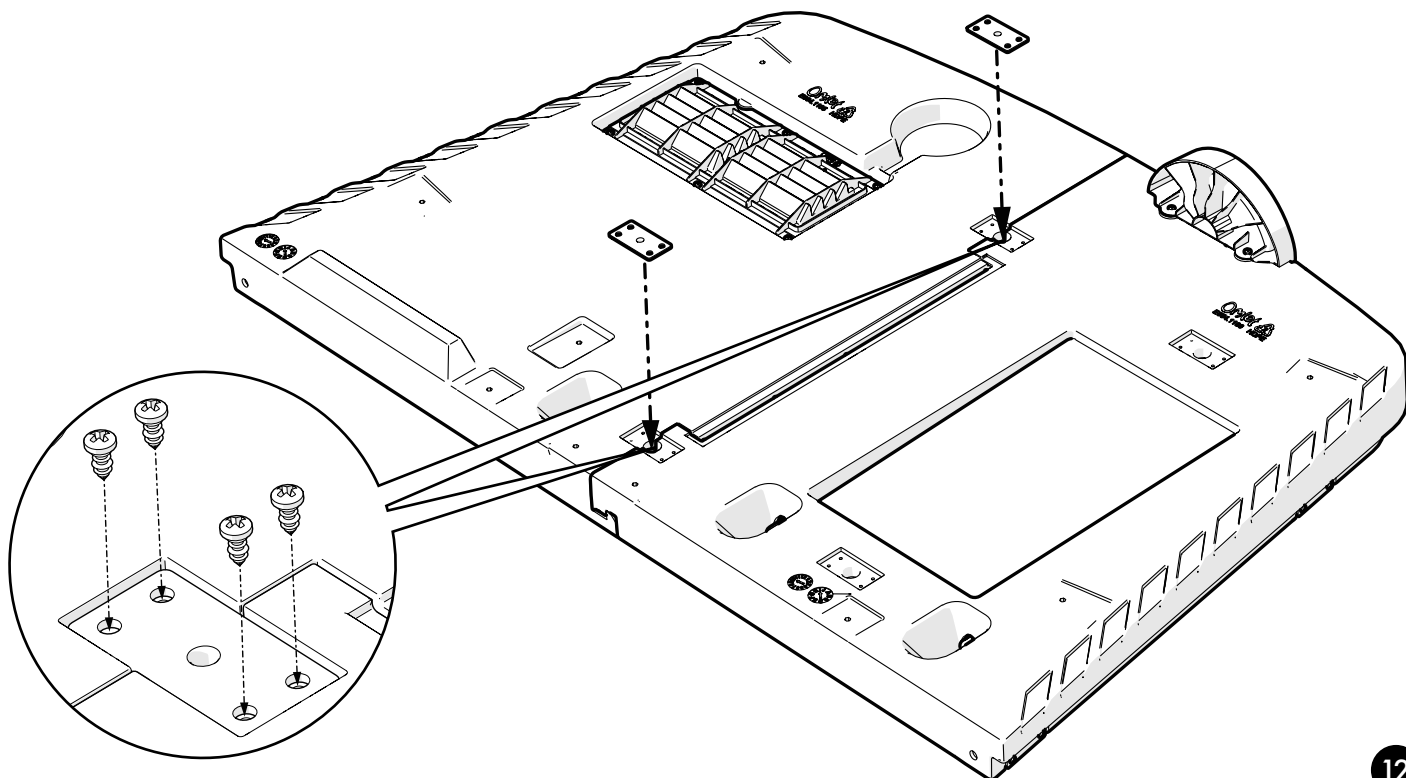
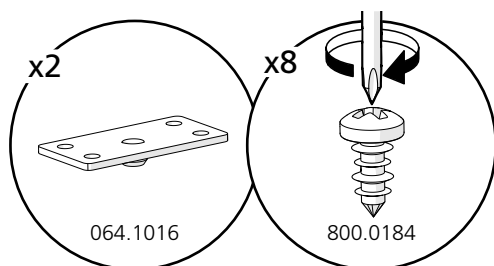
If you have a run ignore this step



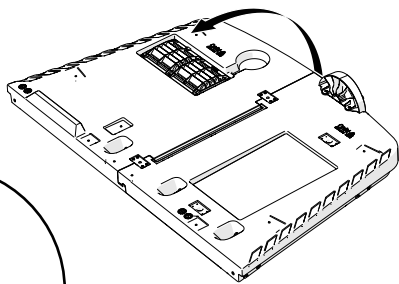
7



8



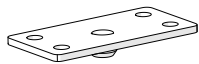
9



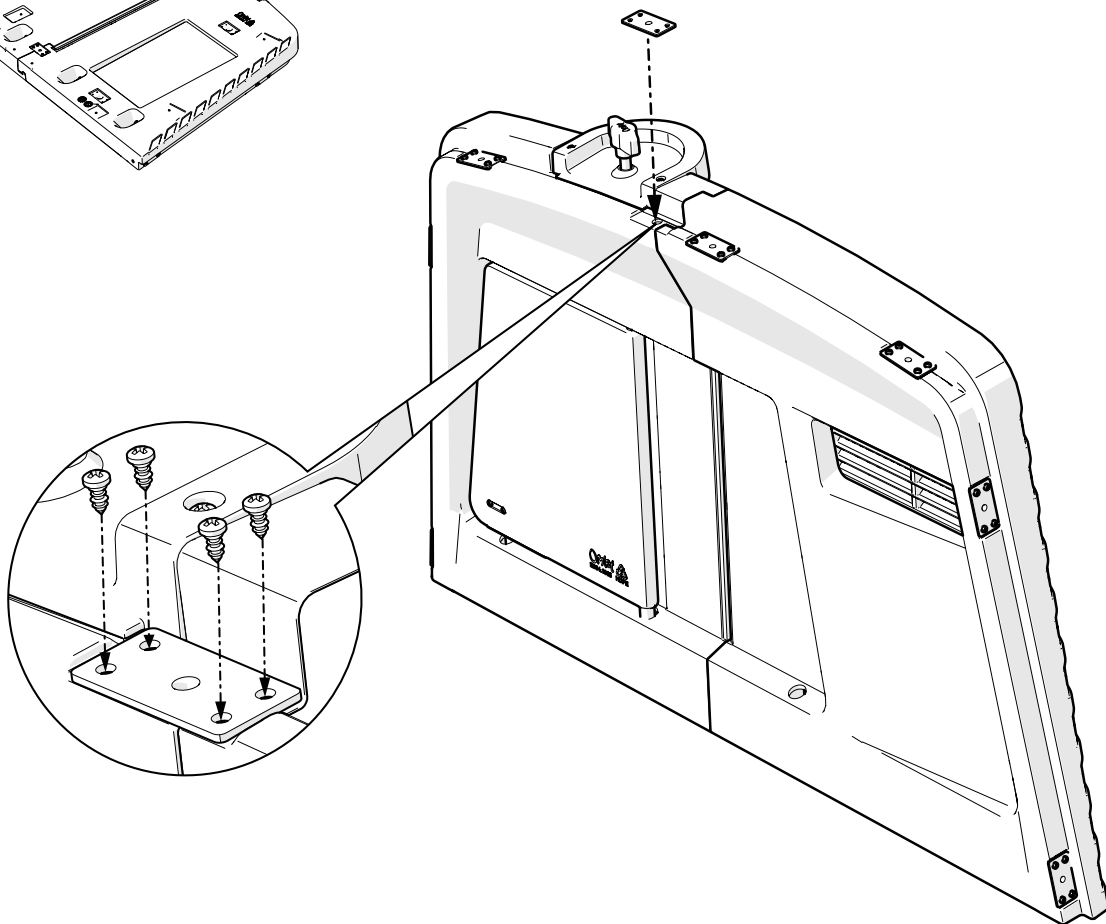
x4



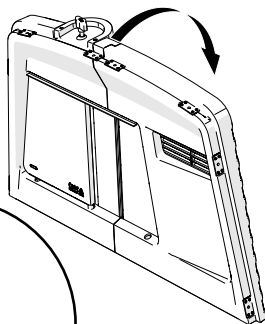
800.0184



064.1016



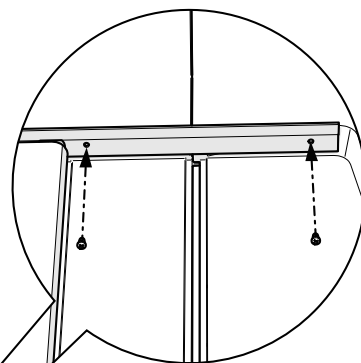
10



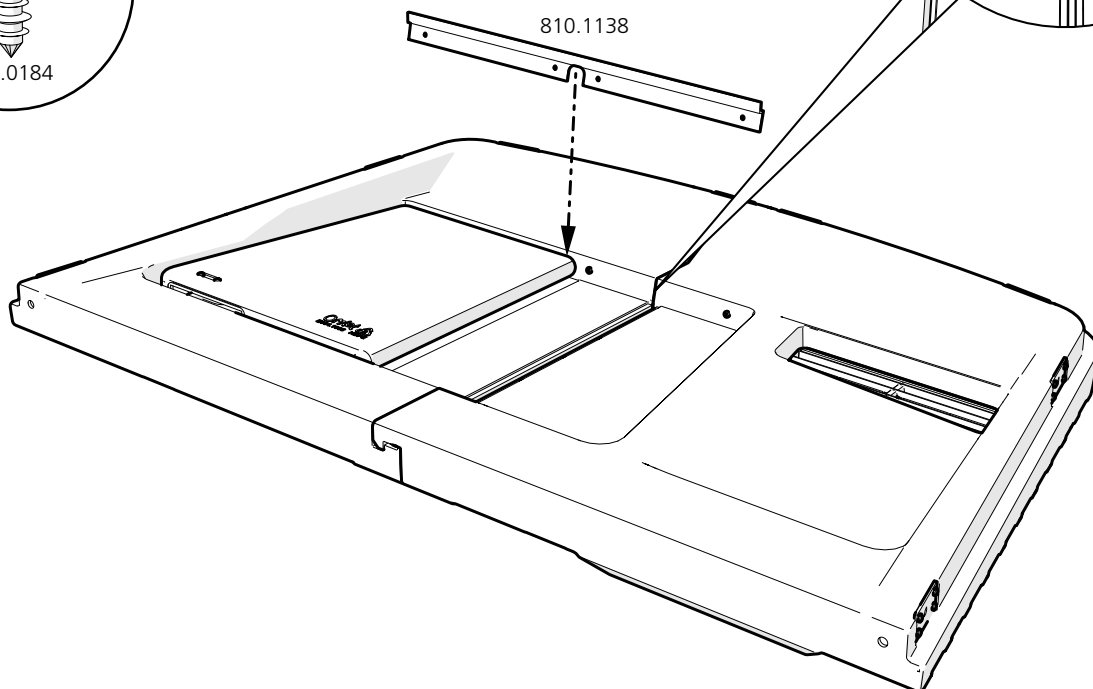
x2



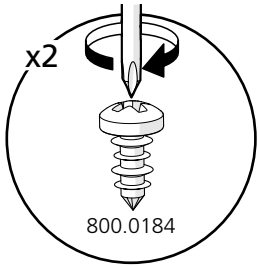
800.0184



810.1138



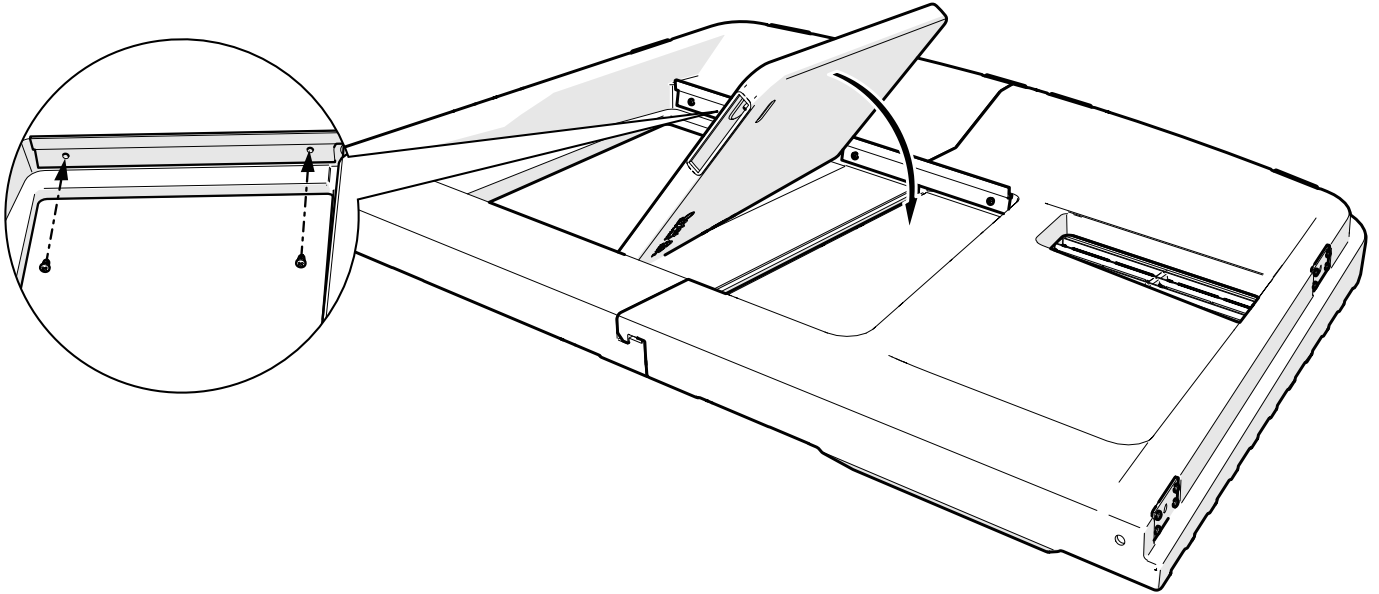
11



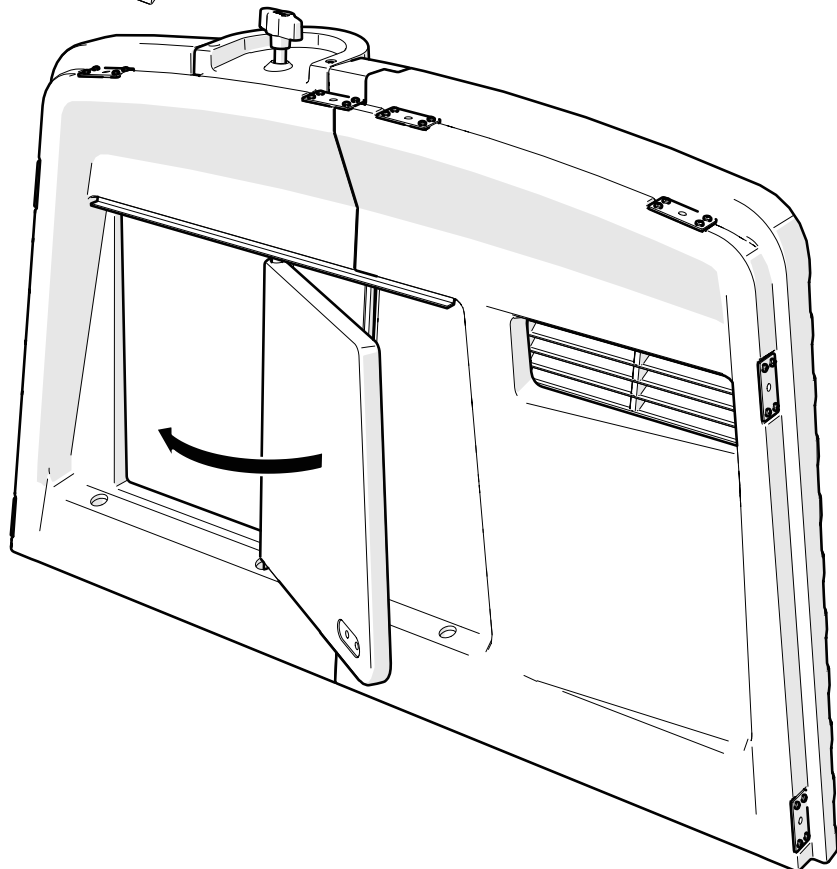
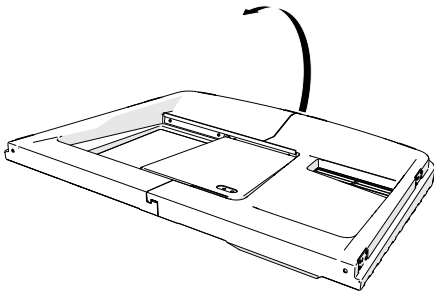
Door Operation Instructions



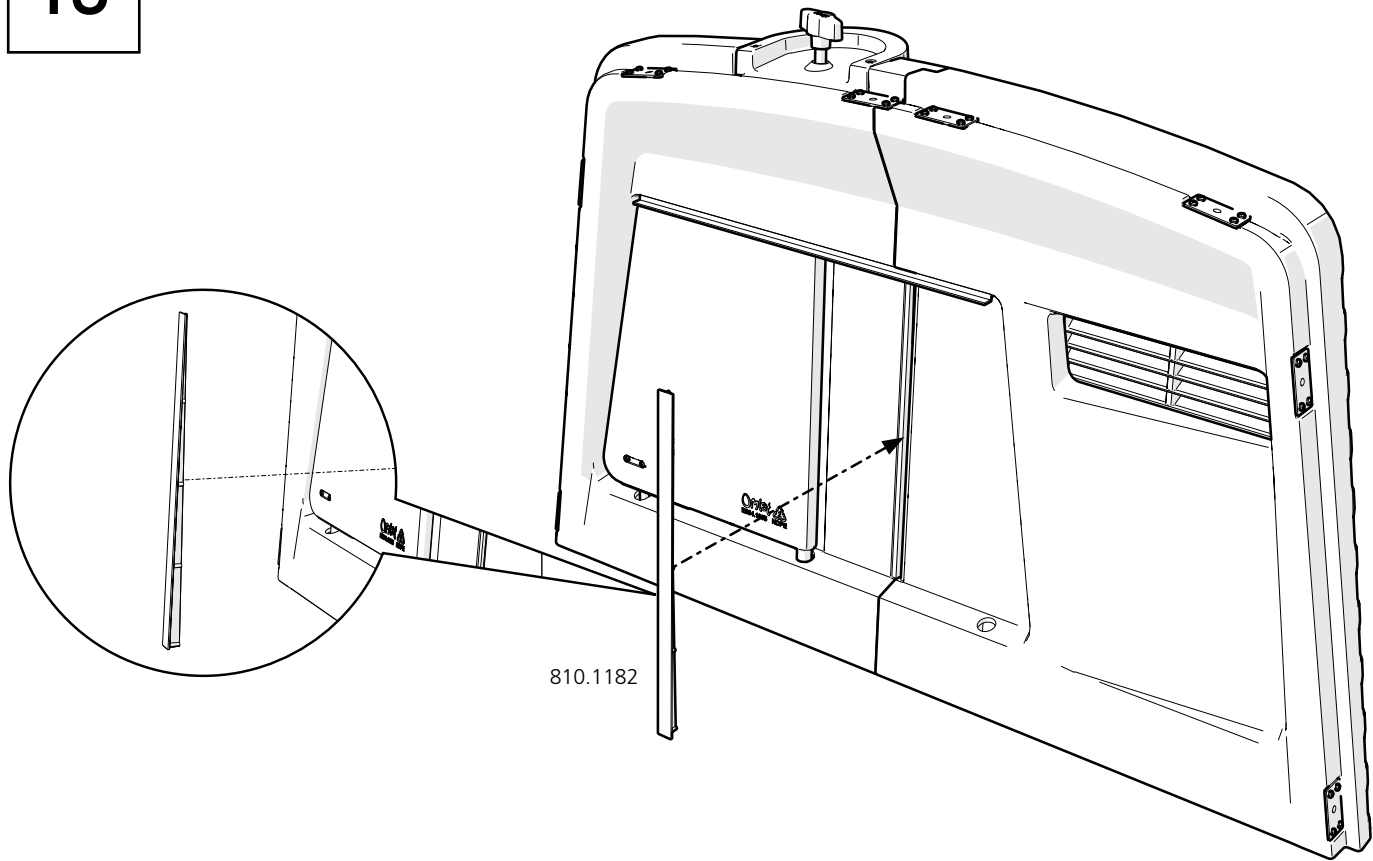
page
33



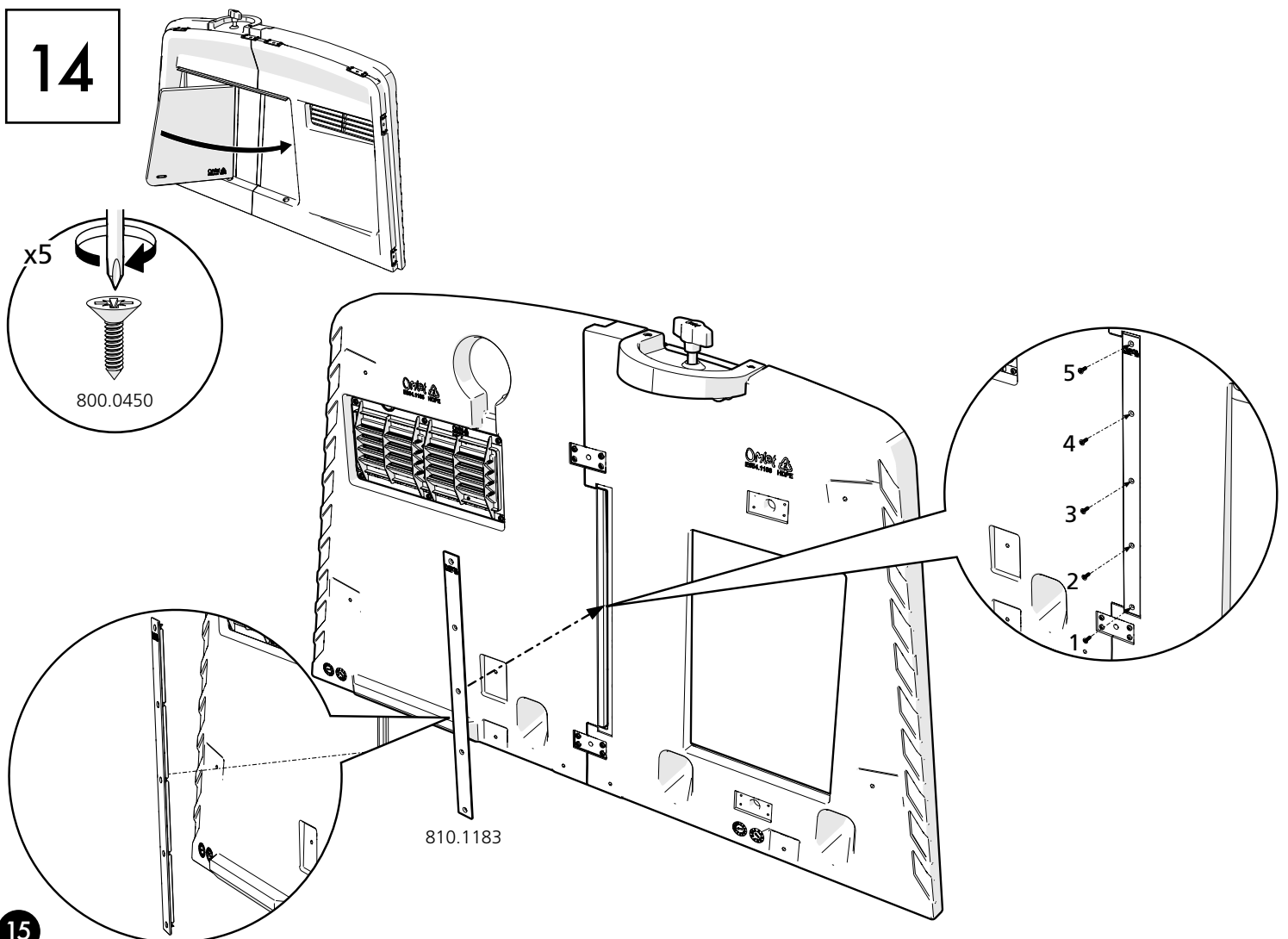
12



13

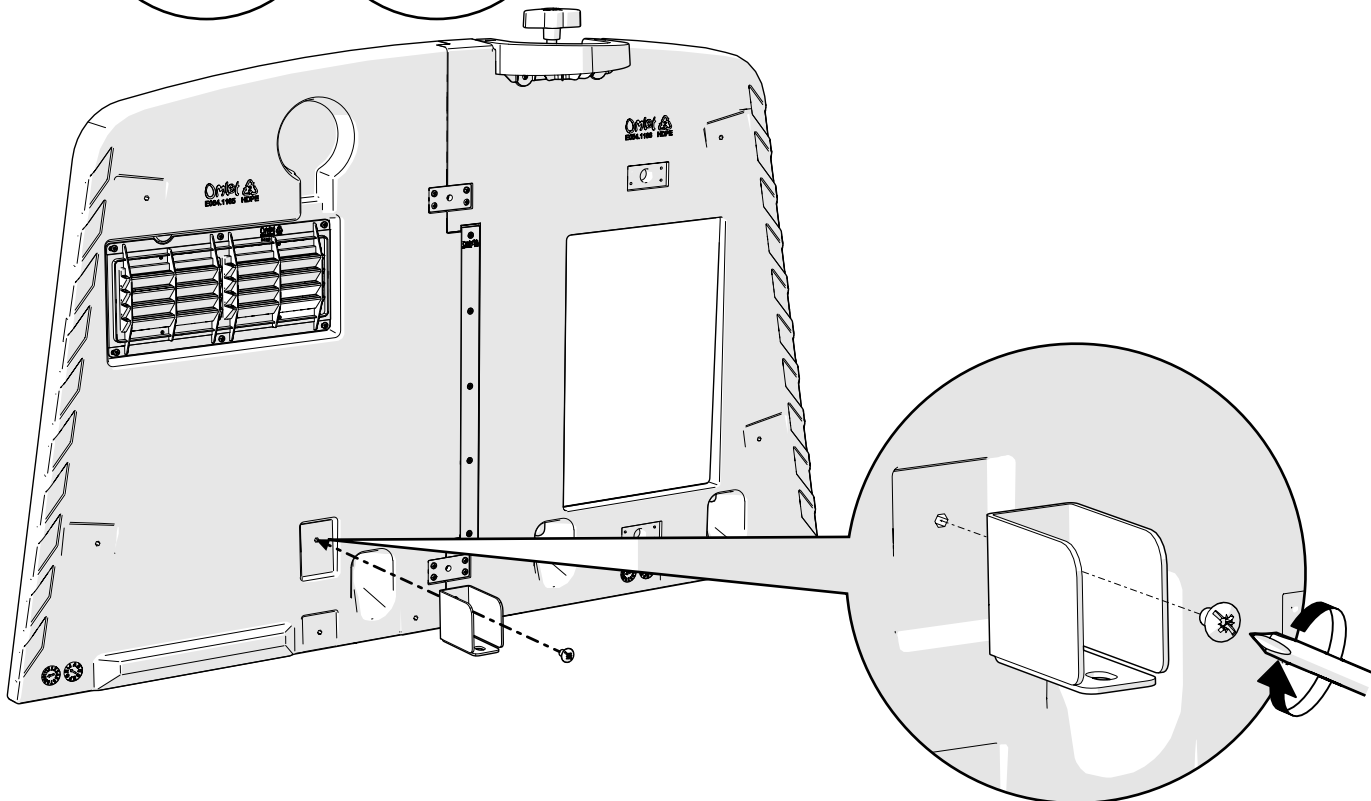
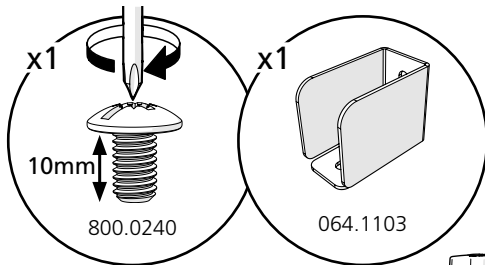


14

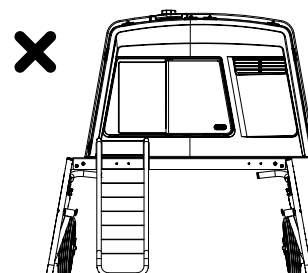
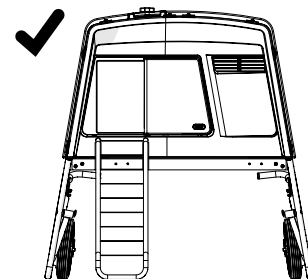
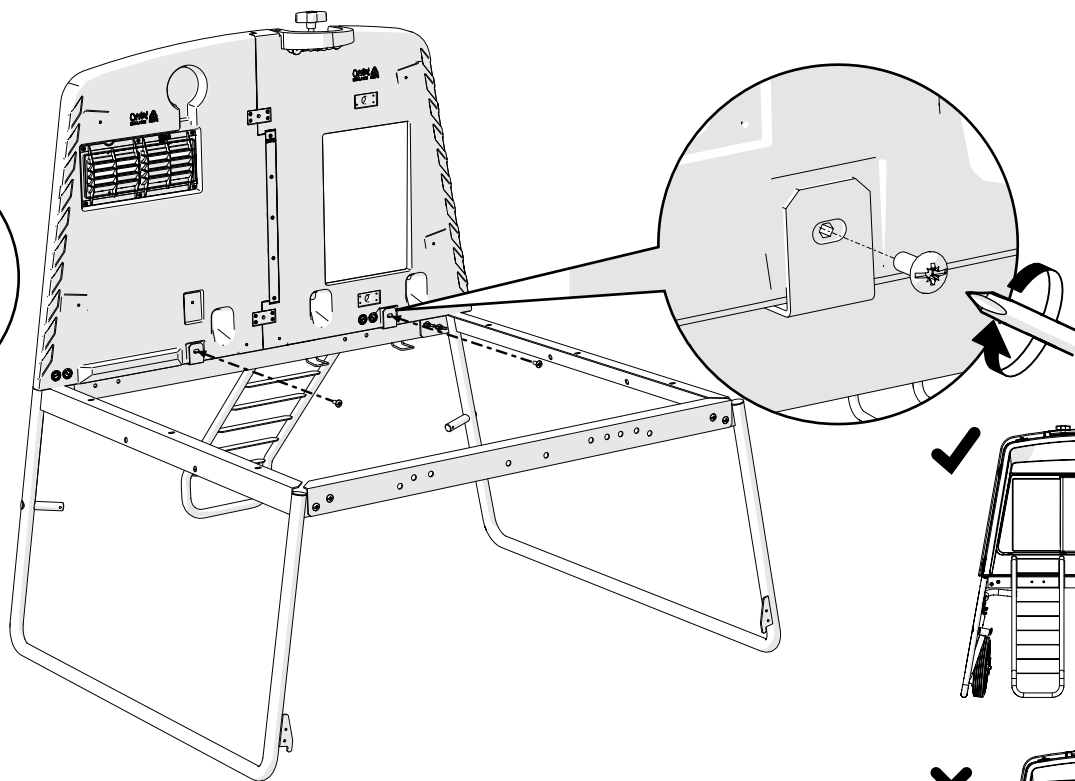
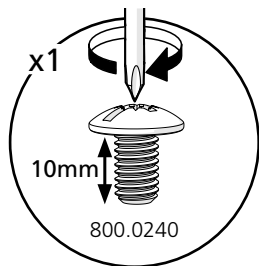


15

15

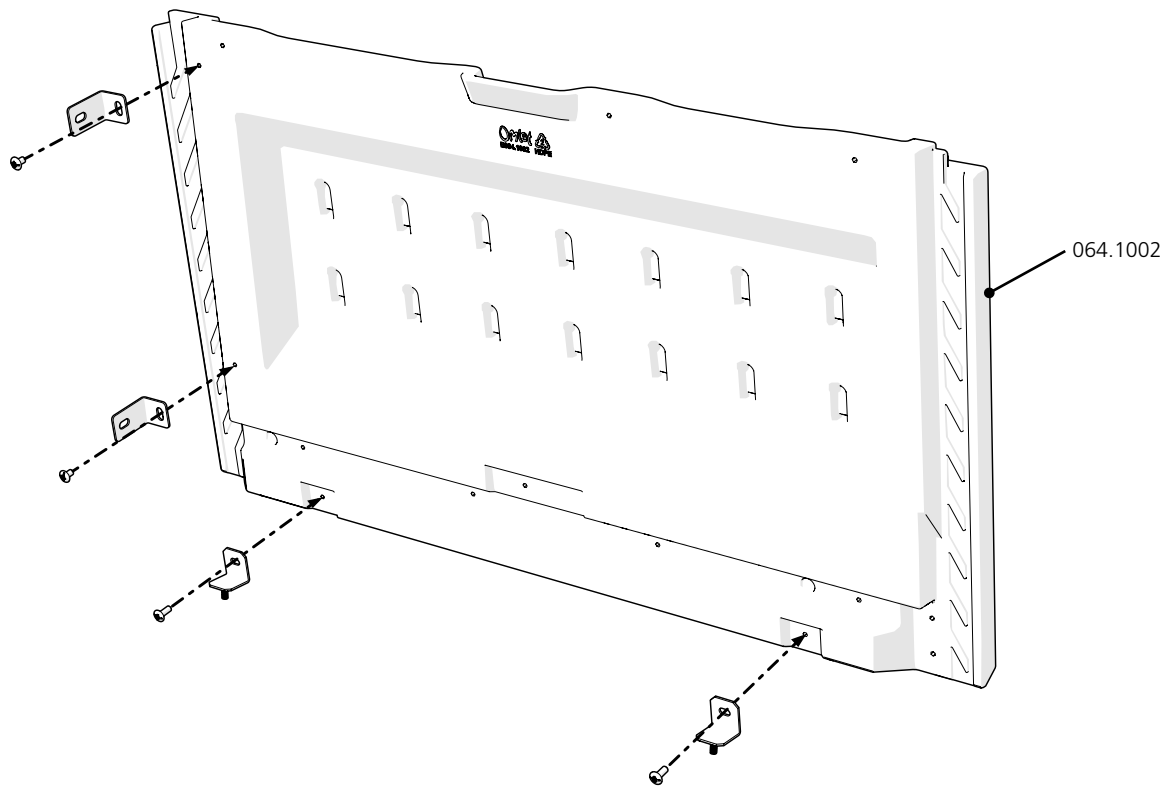
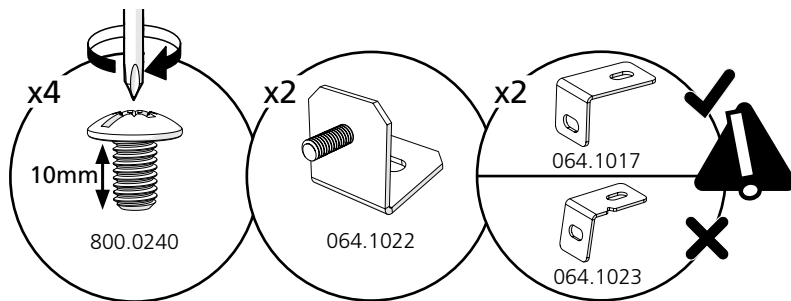


16

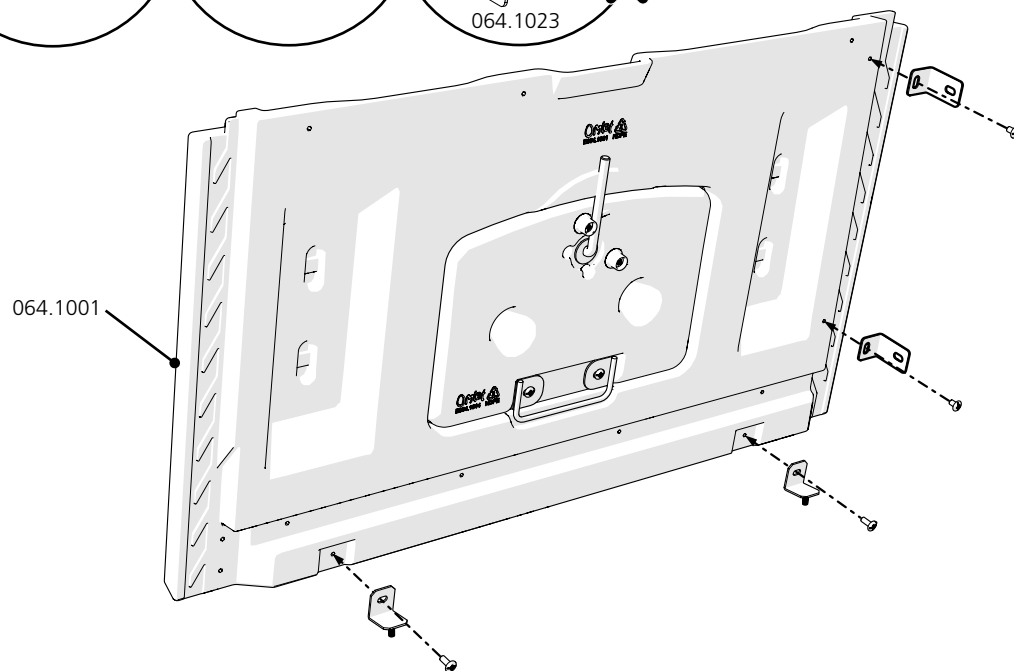
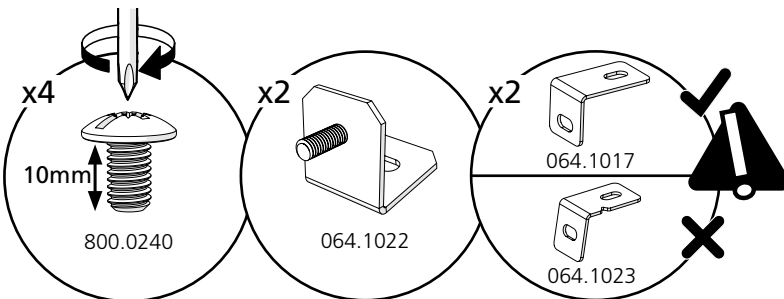


If you have a run please refer to the instructions now

17

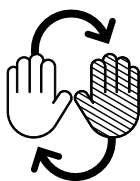


18

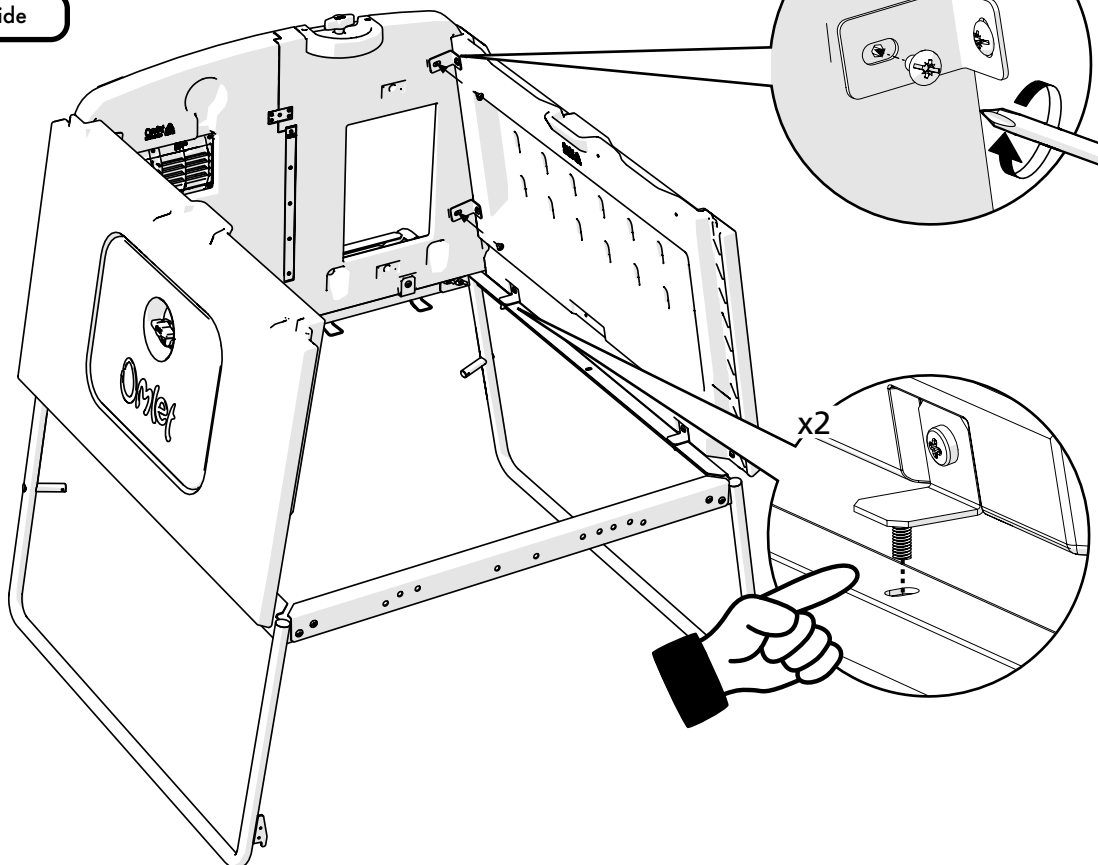
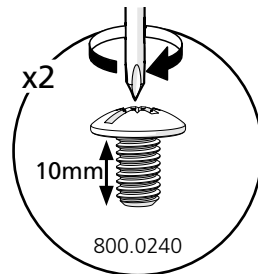


19

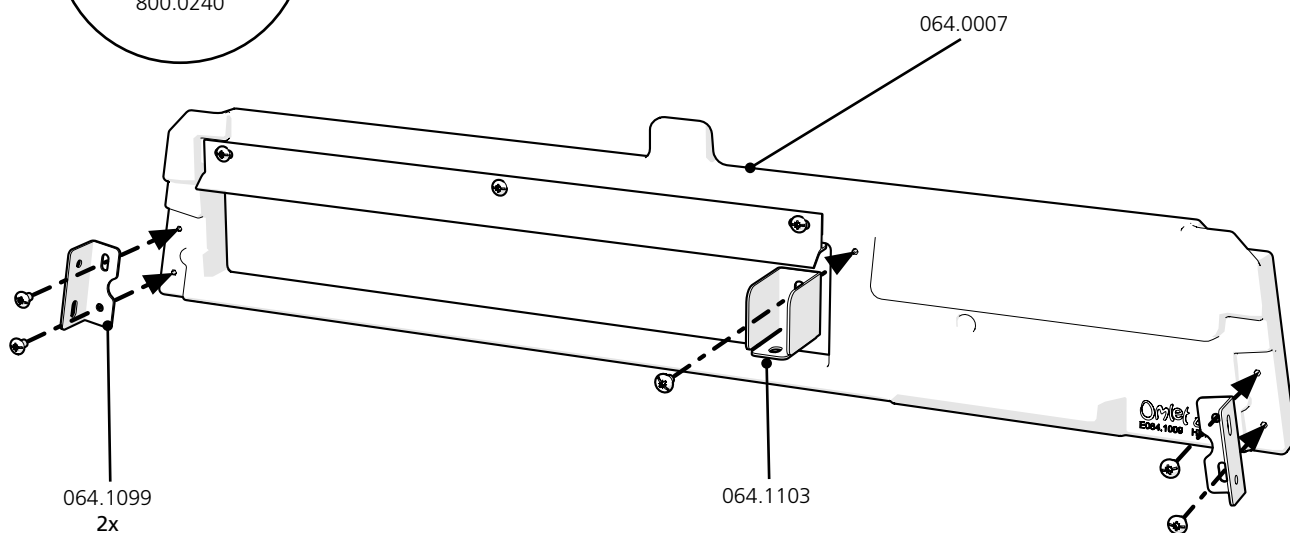
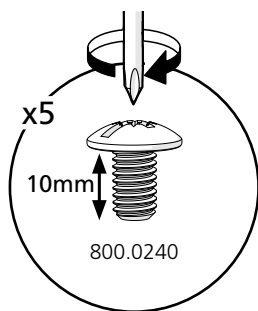
(Run and wheels not shown for clarity)



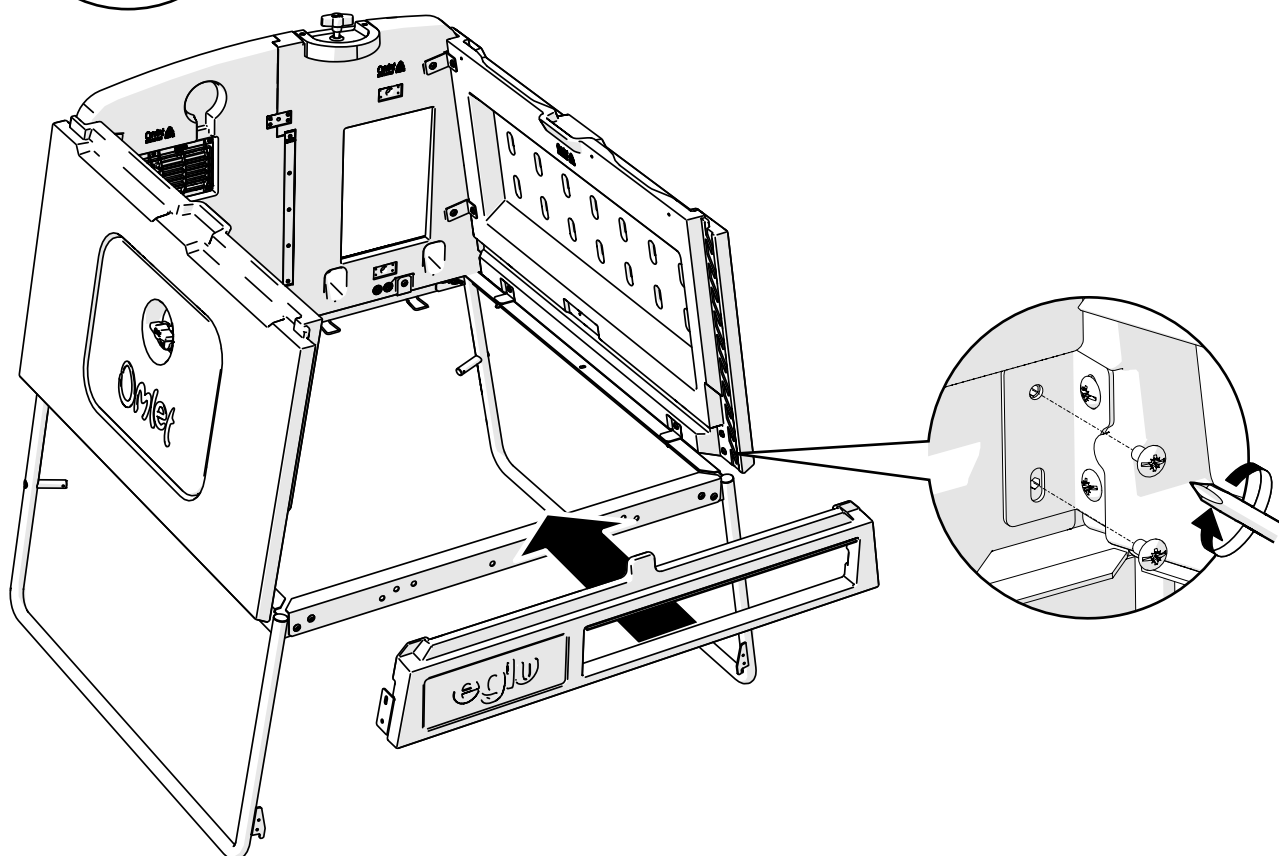
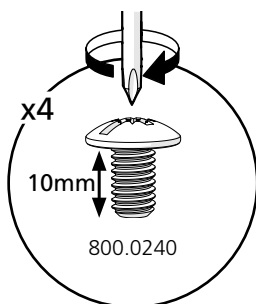
Repeat on other side



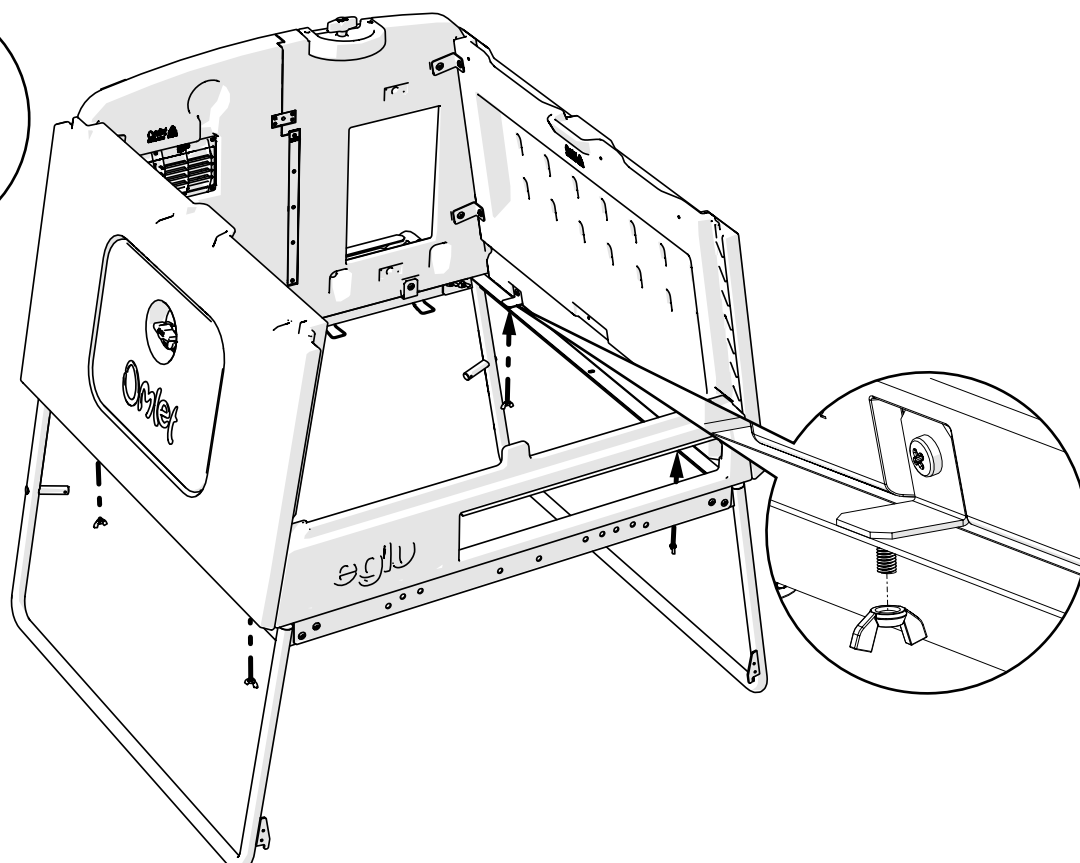
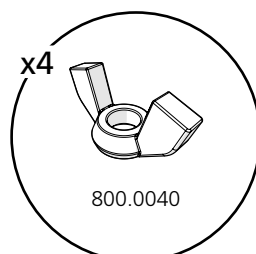
20



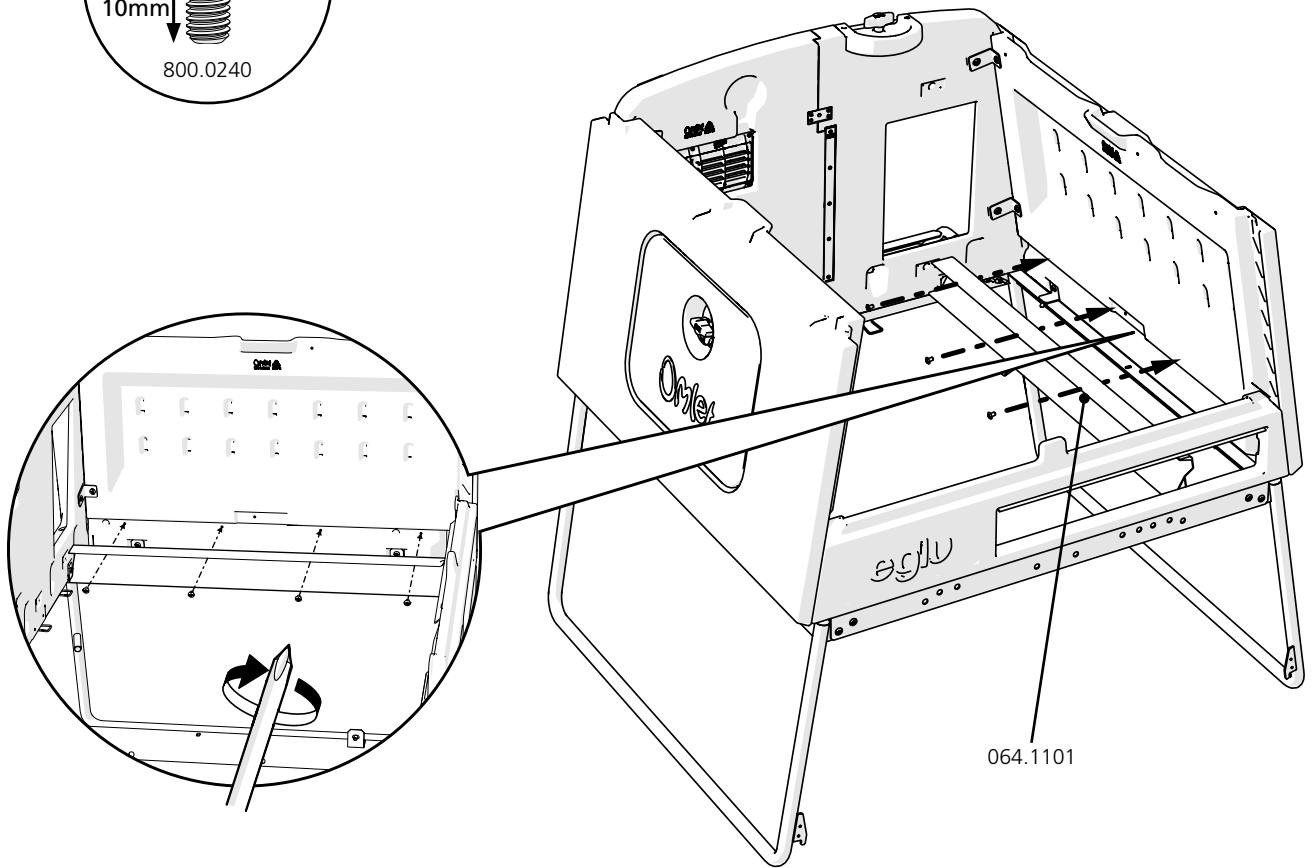
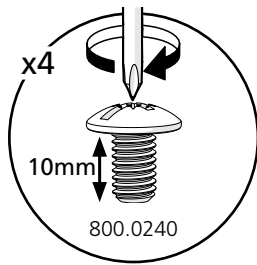
21



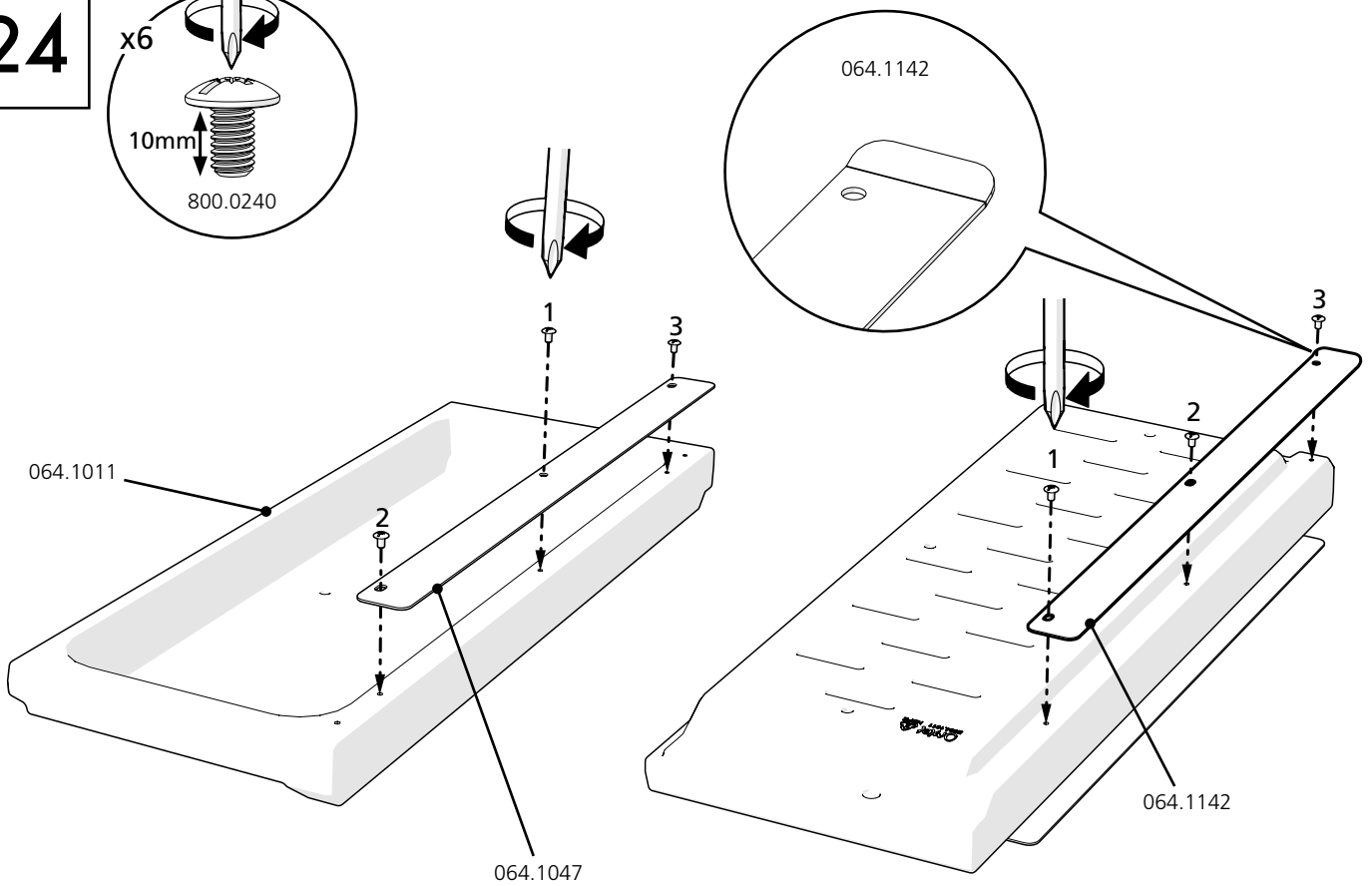
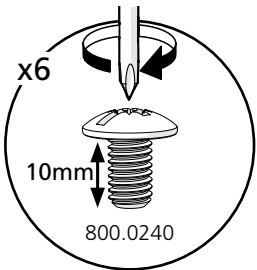
22



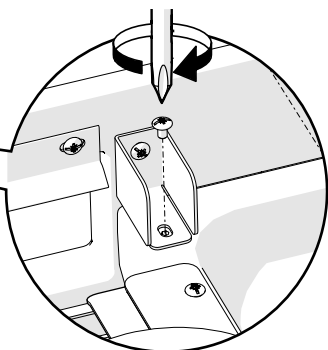
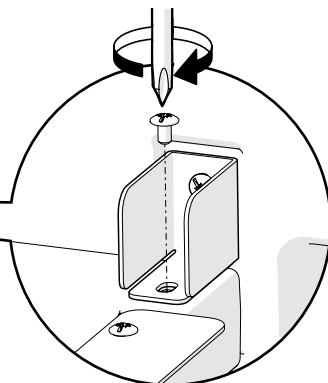
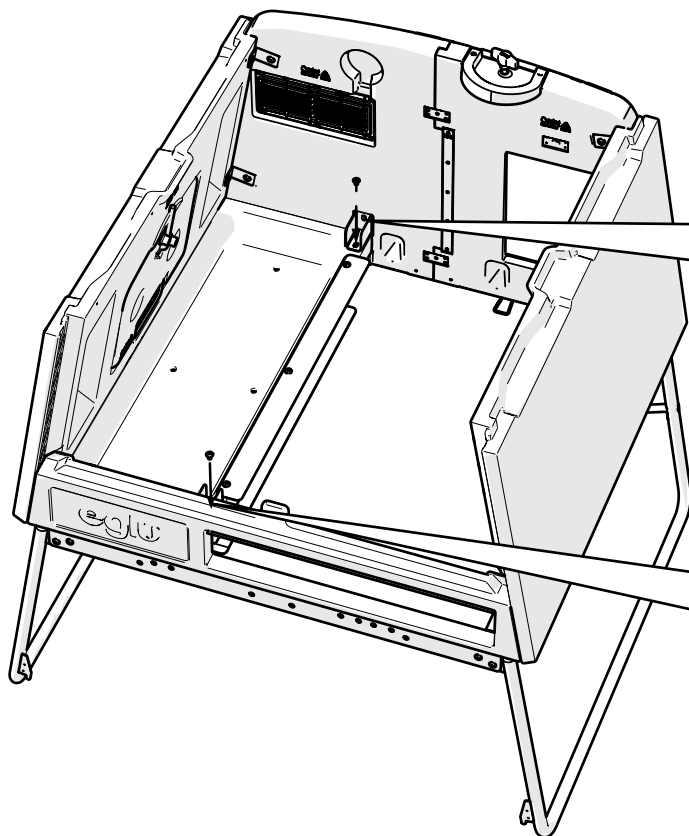
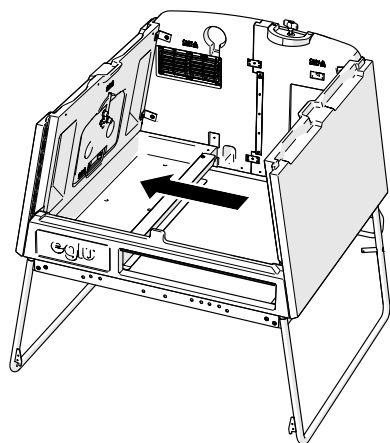
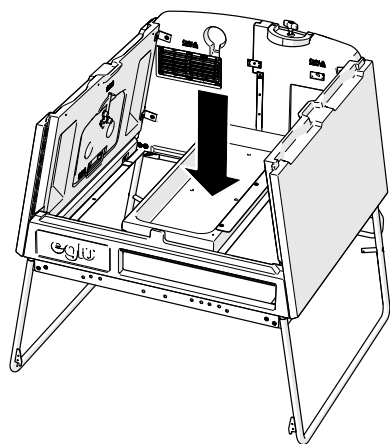
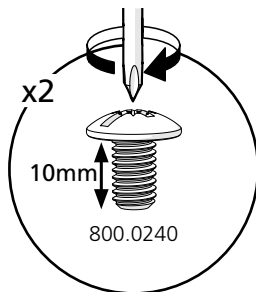
23



24

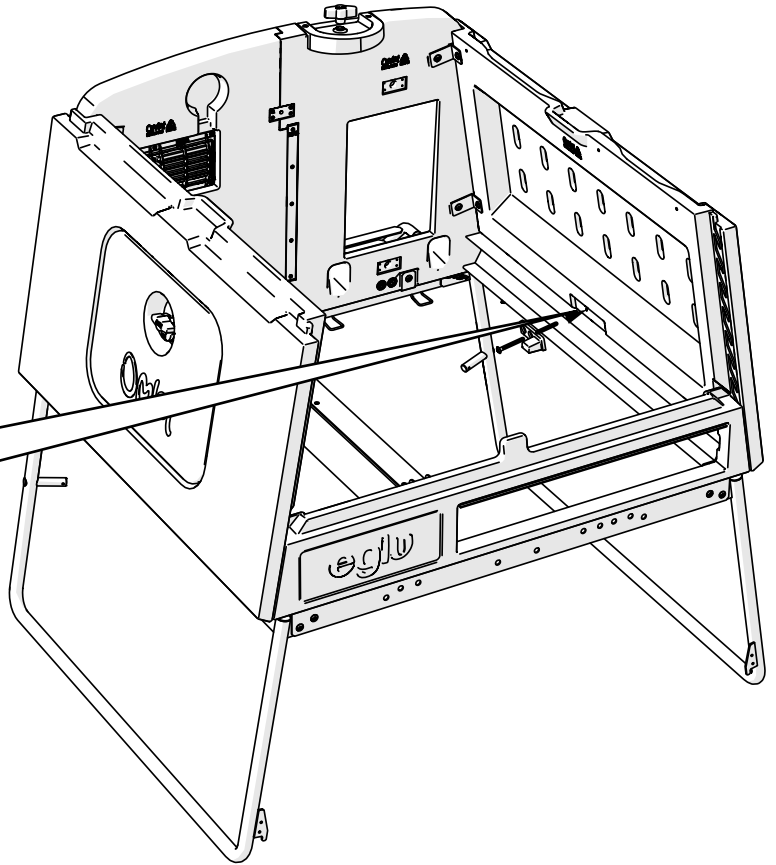
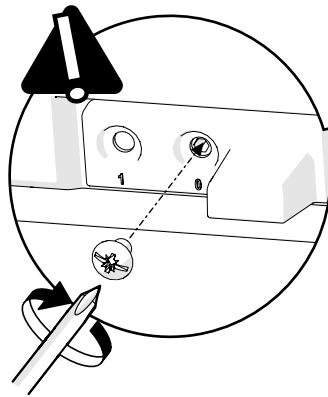
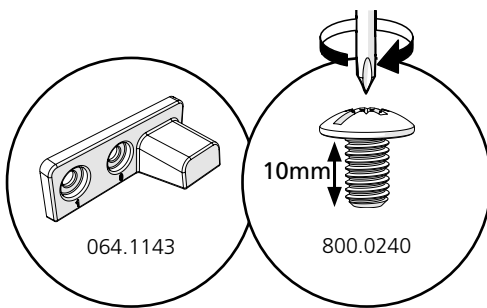


25

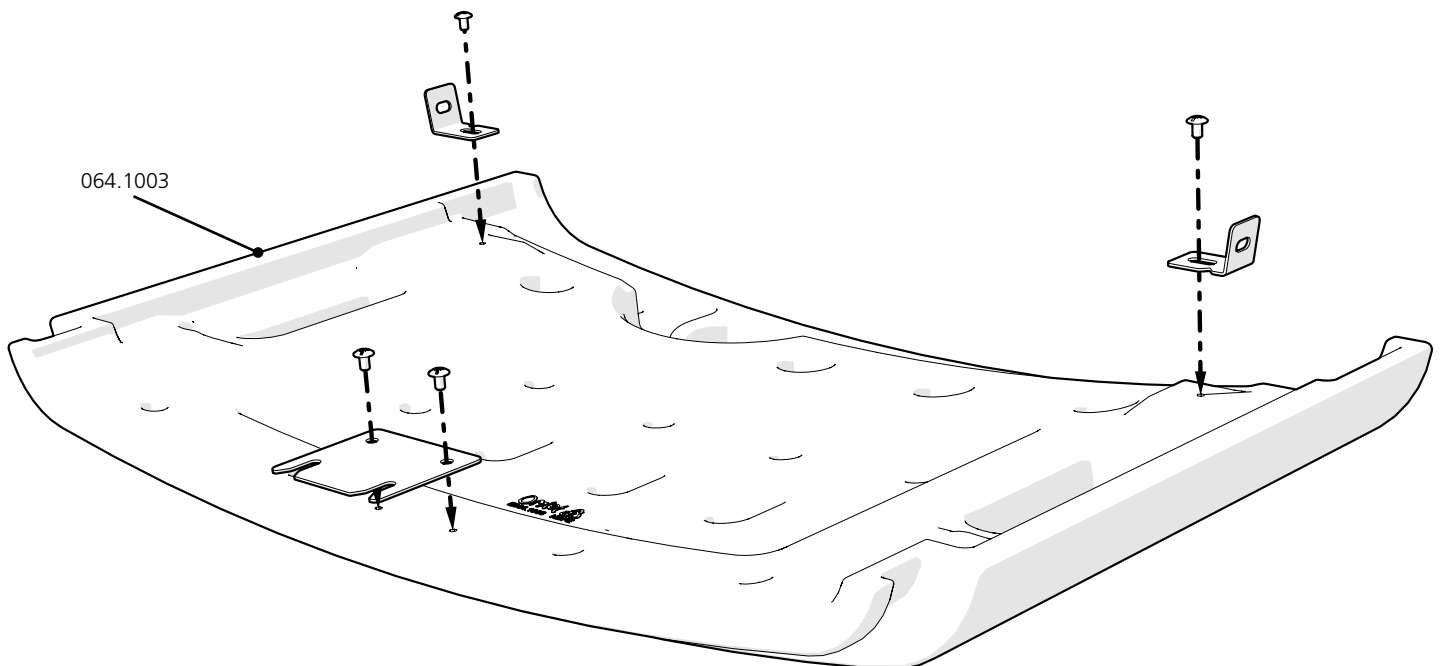
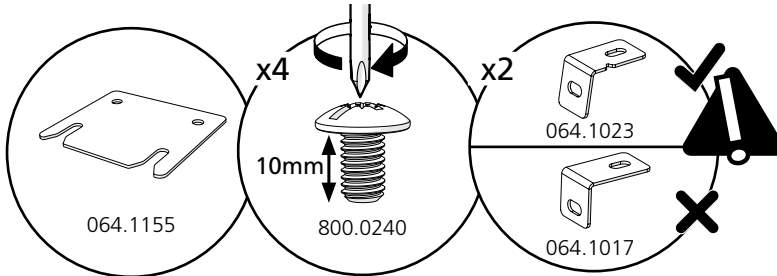


If you have an Auto Door attach it to the house at this stage. Refer to the Auto Door Instruction manual.

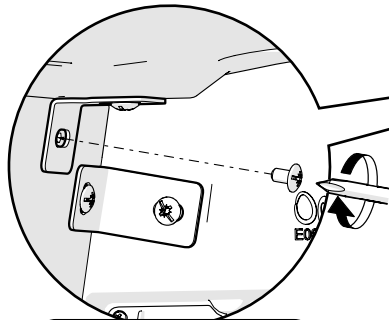
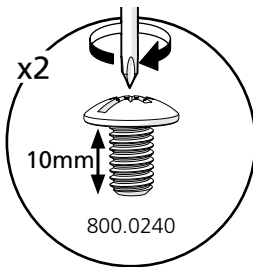
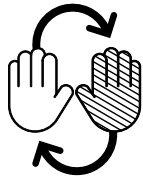
26



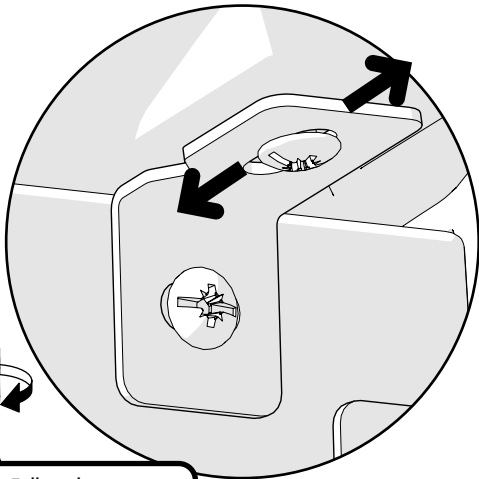
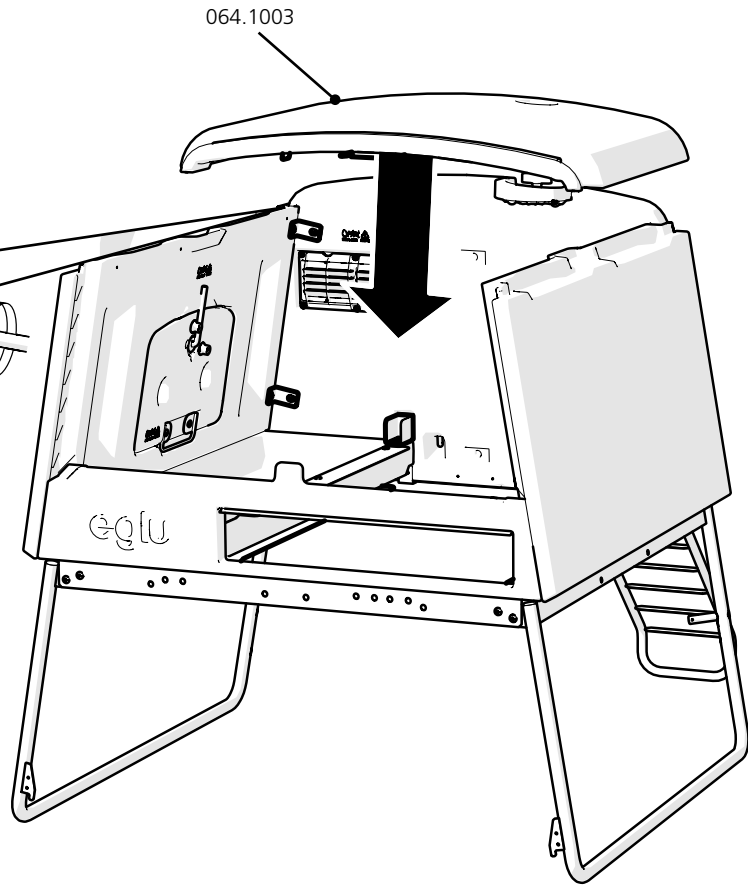
27



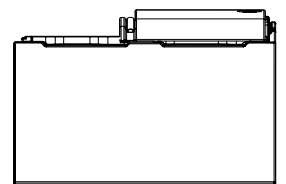
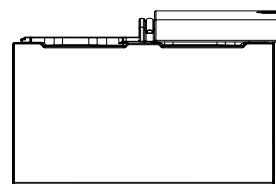
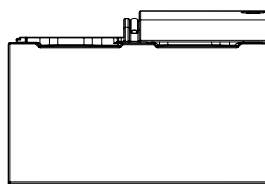
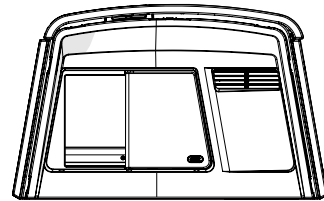
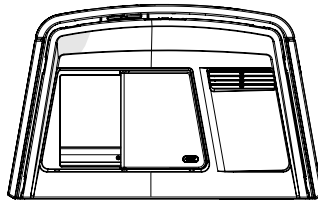
28

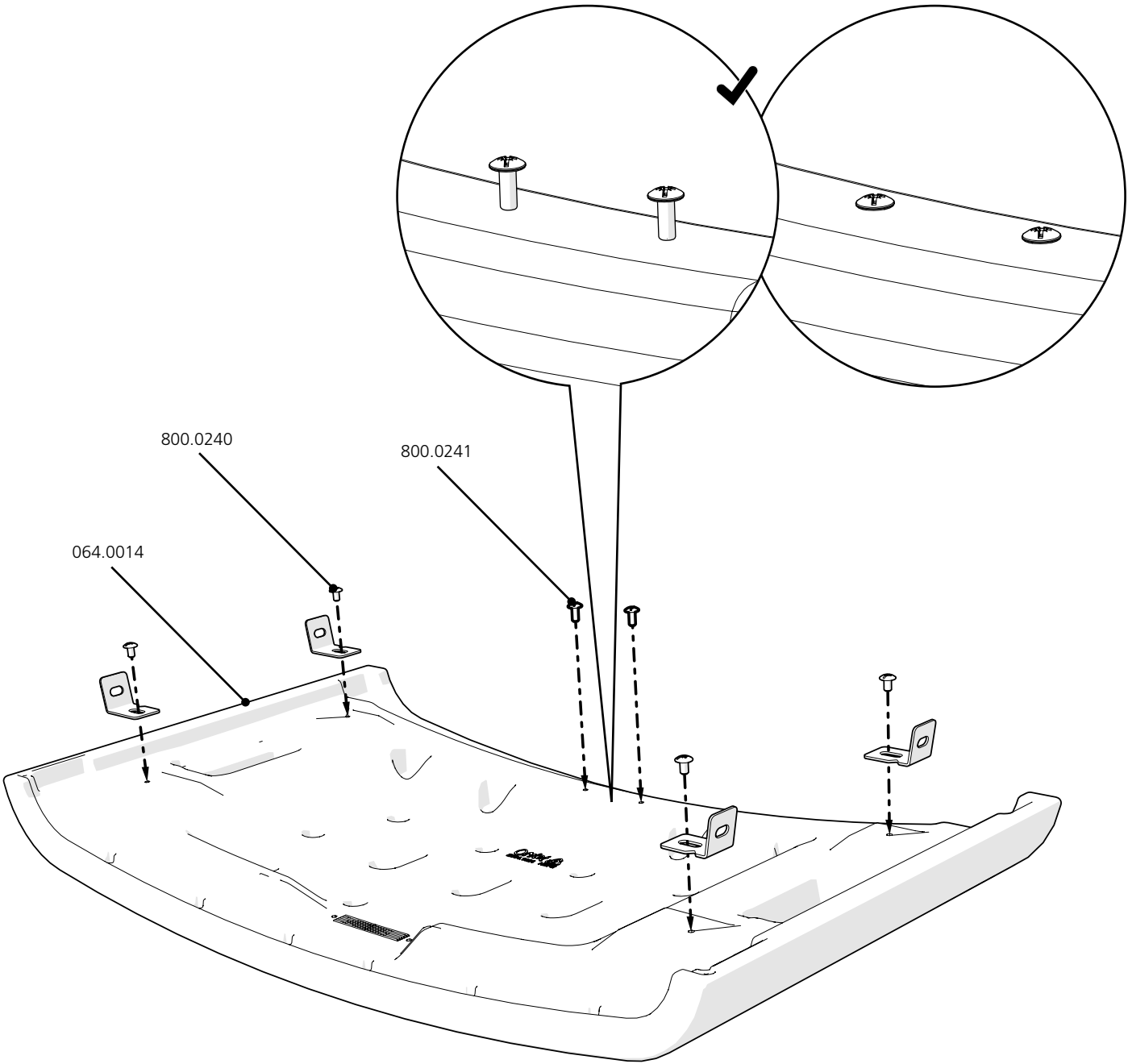
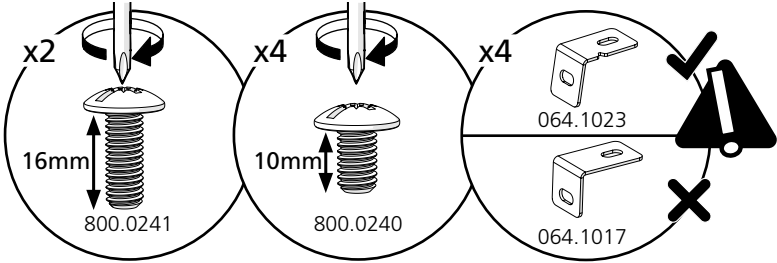


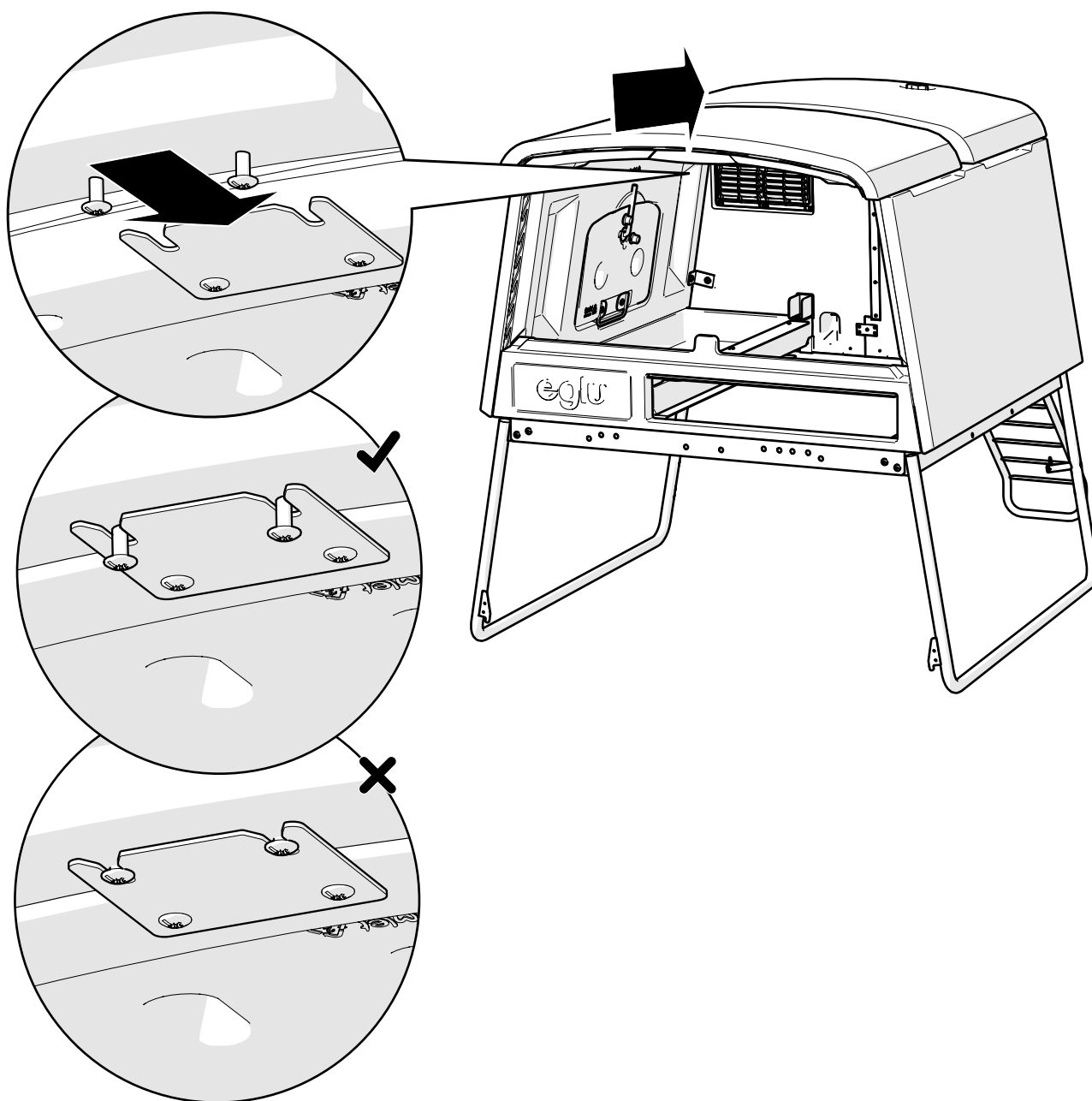
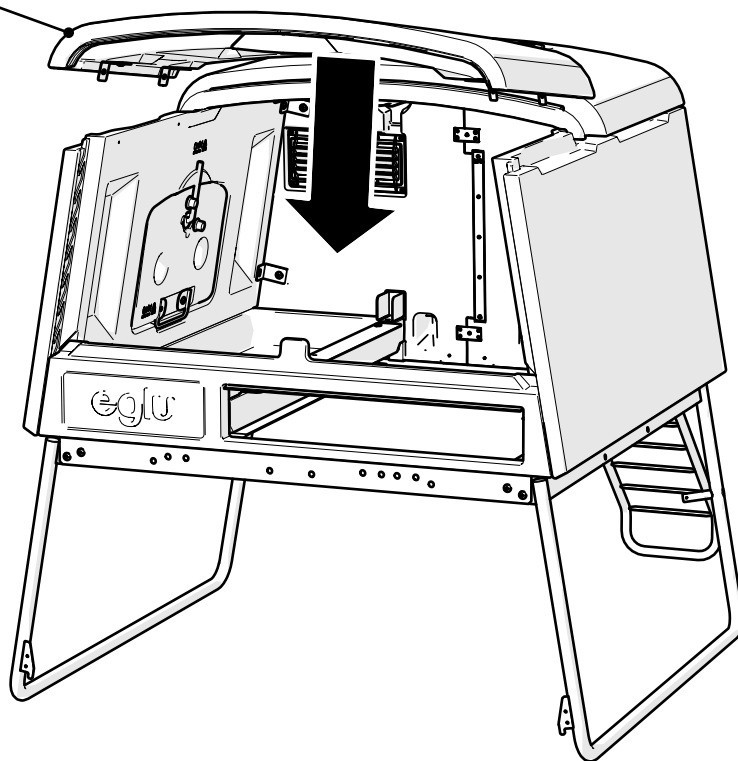
Partially tighten



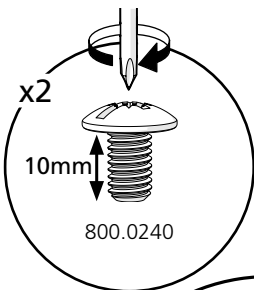
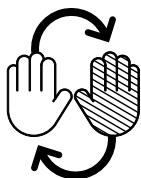
Fully tighten



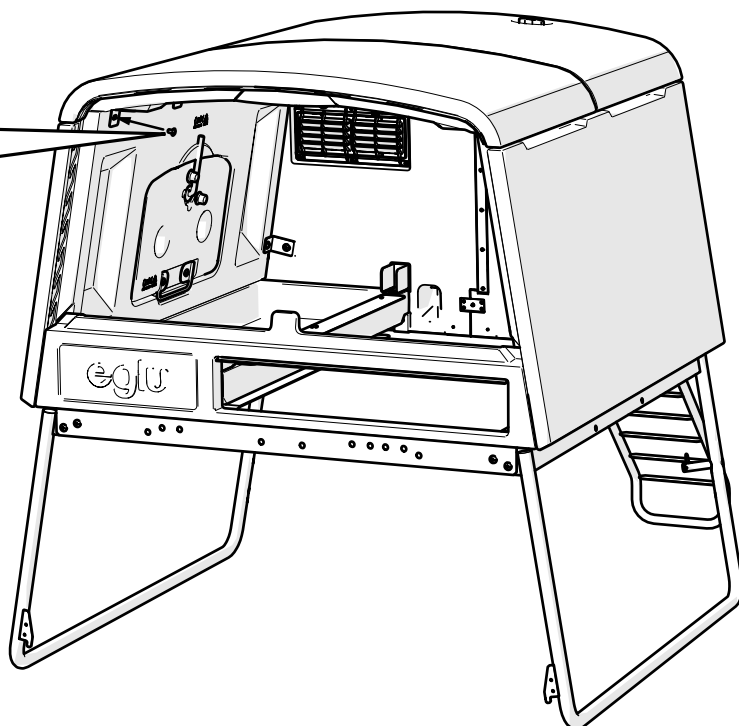
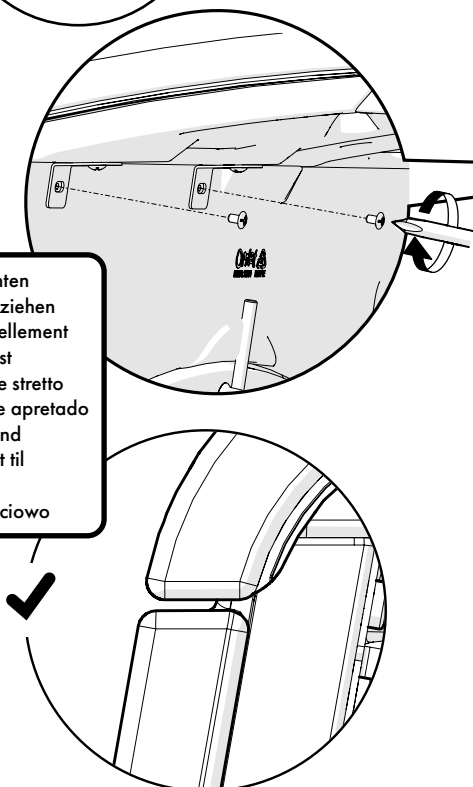




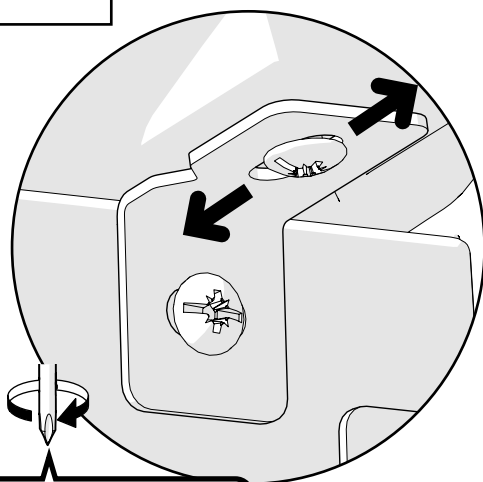
31



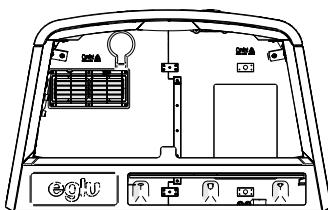
- UK** Partially tighten
- DE** Teilweise anziehen
- FR** Serrez partiellement
- NL** Zet deels vast
- IT** Parzialmente stretto
- ES** Parcialmente apretado
- SE** Delvis åtspänd
- DK** Stram delvist til
- NO** Stram delvis
- PL** Dokręć częściowo



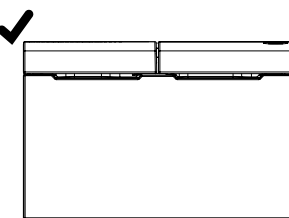
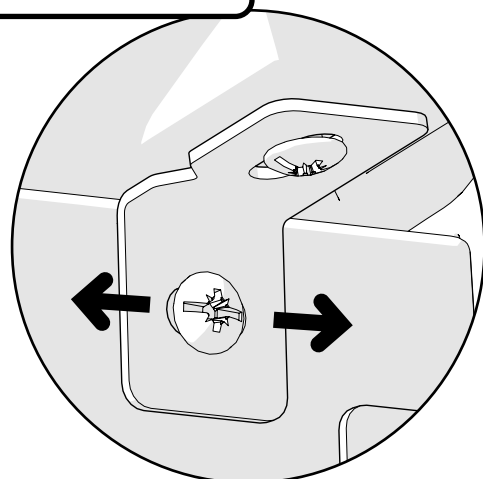
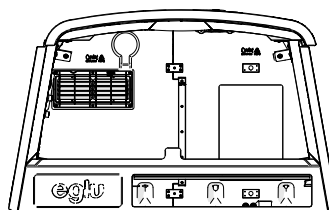
32



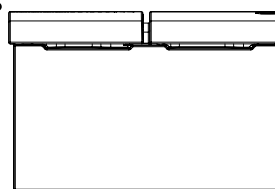
Fully tighten



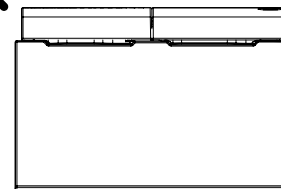
×



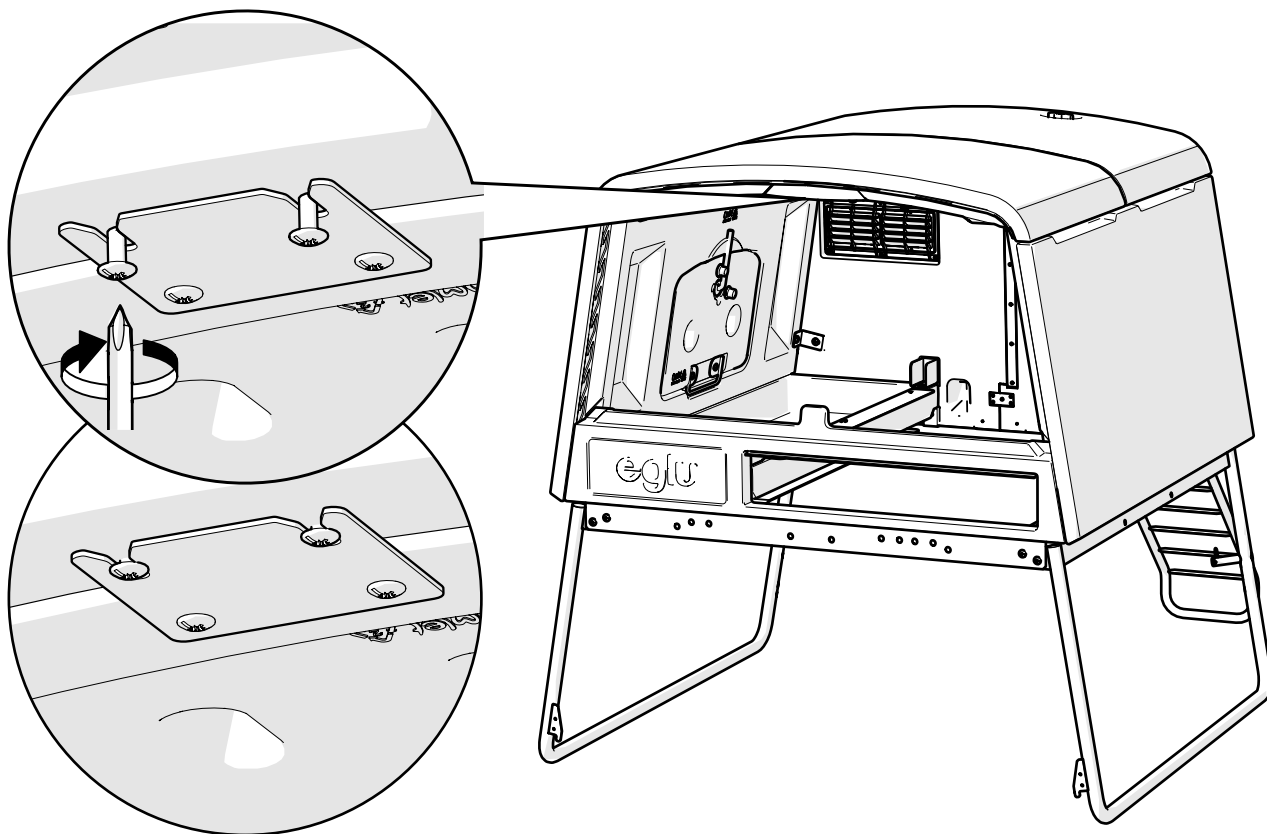
×



×

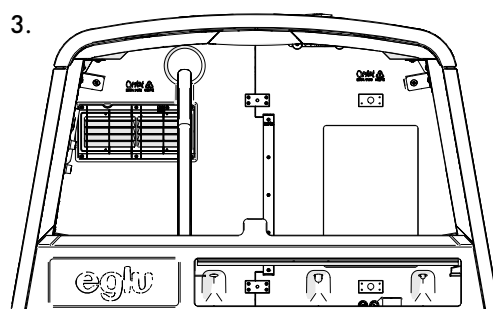
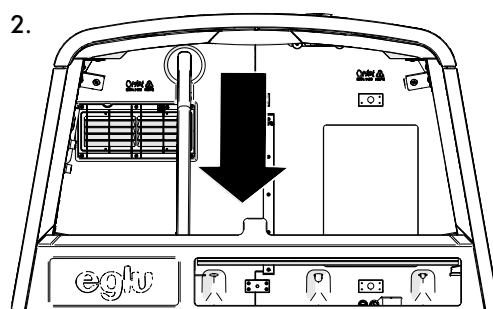
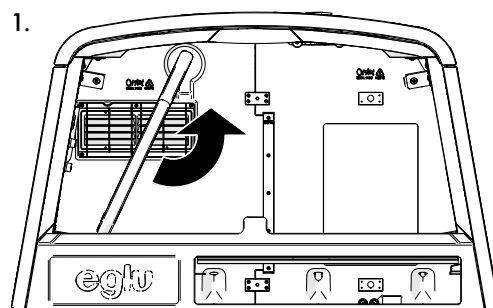
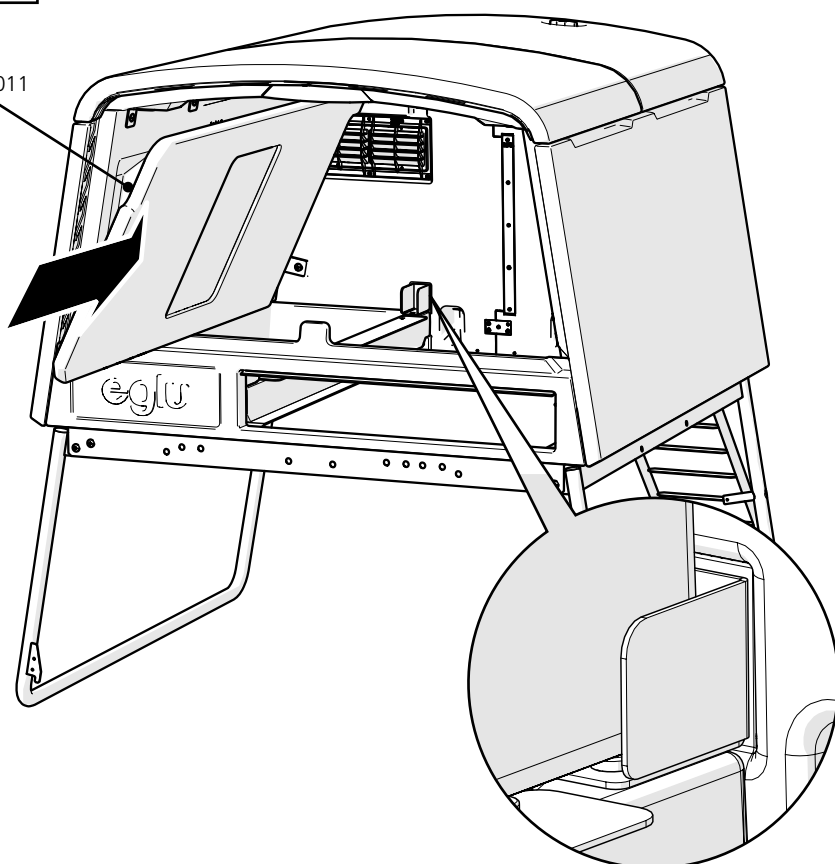


33

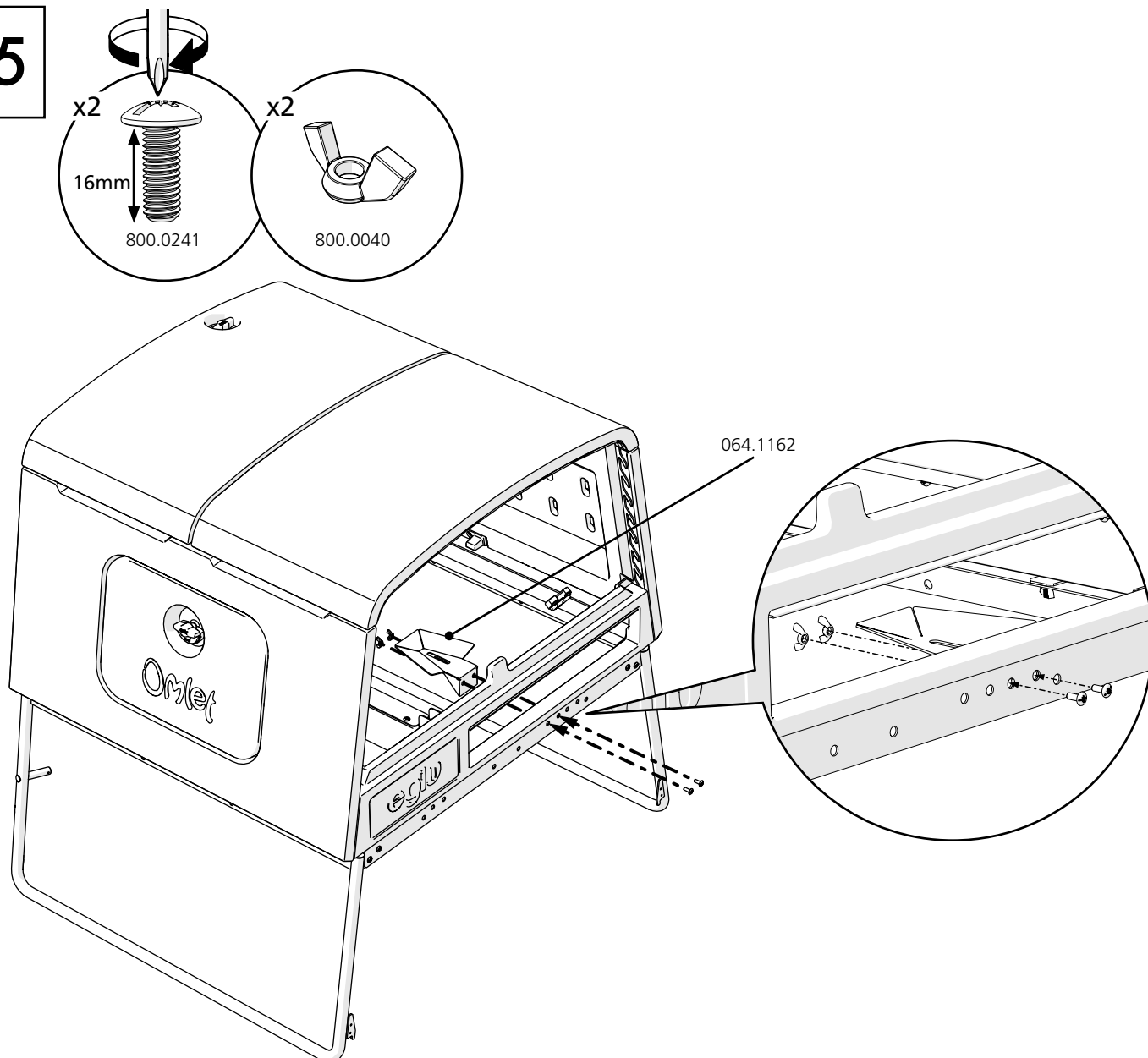


34

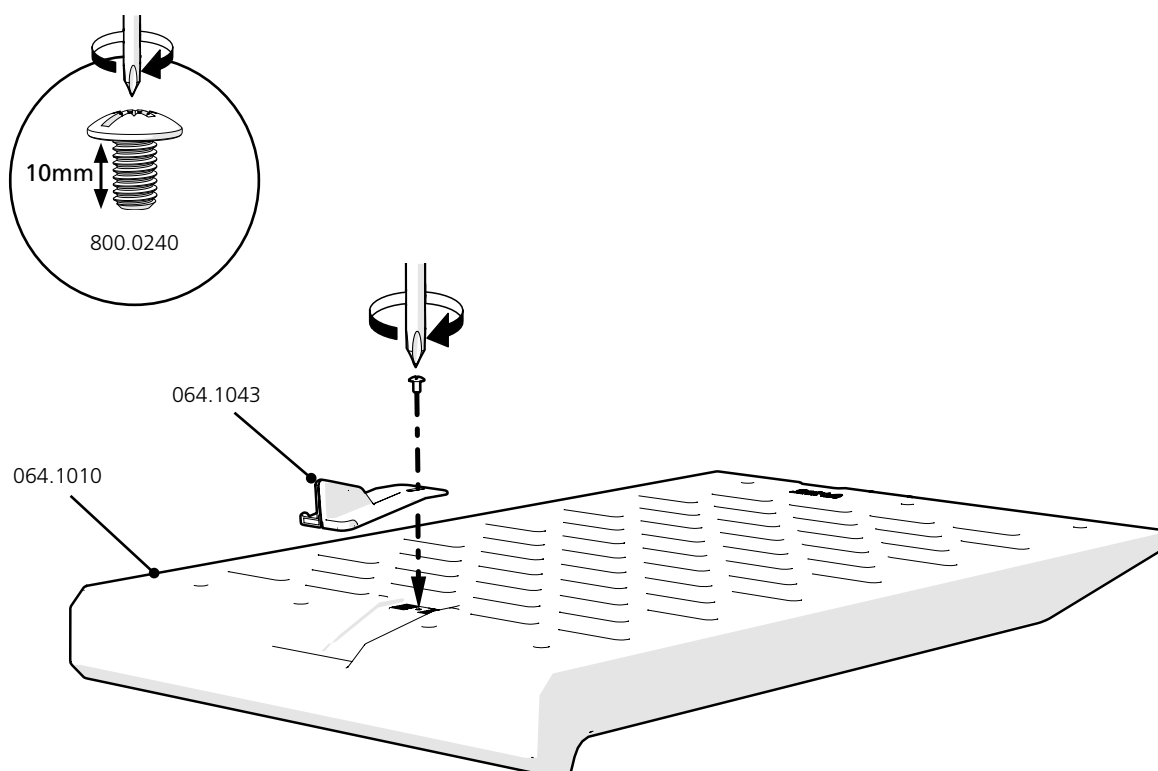
064.0011



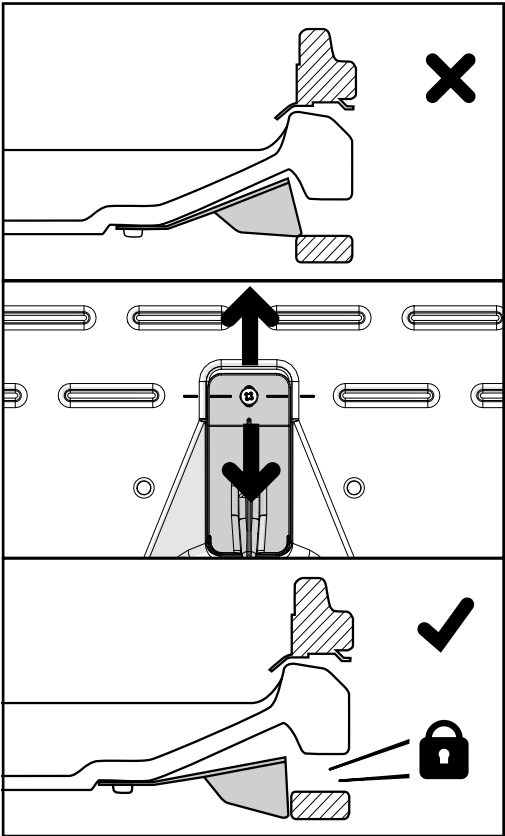
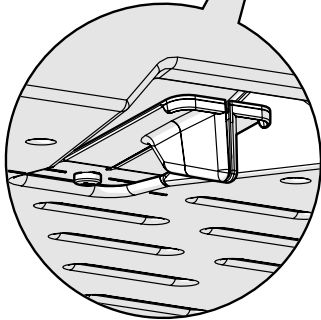
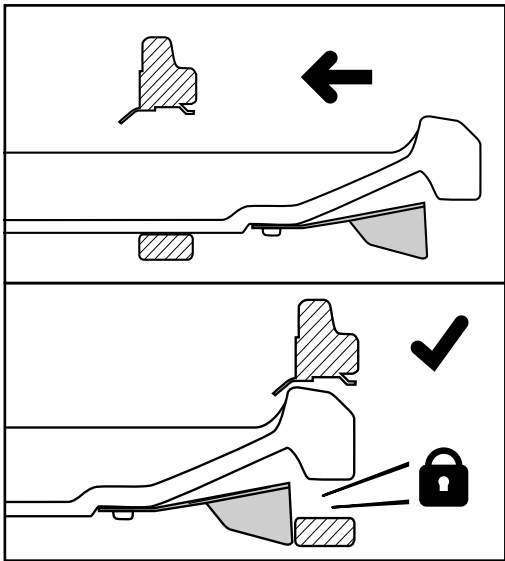
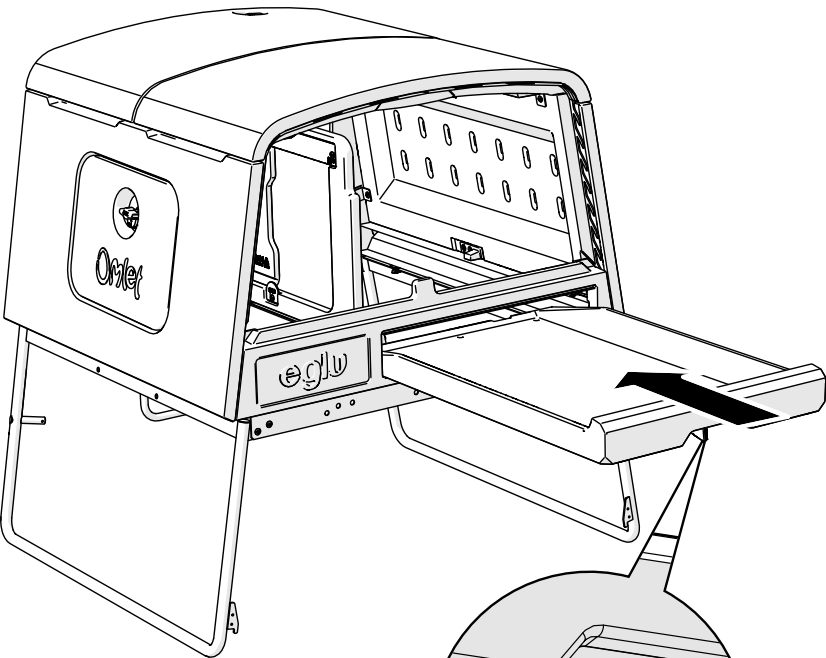
35



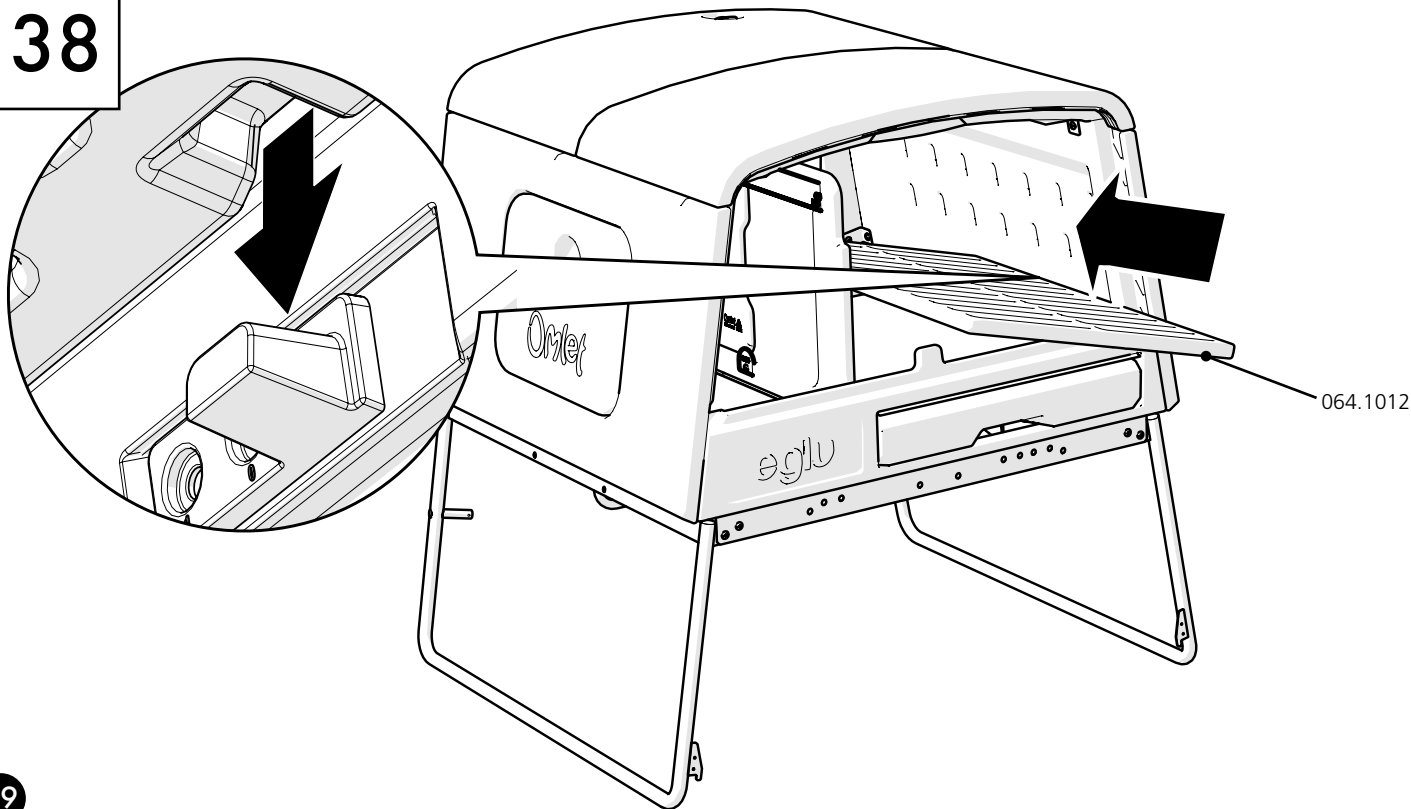
36



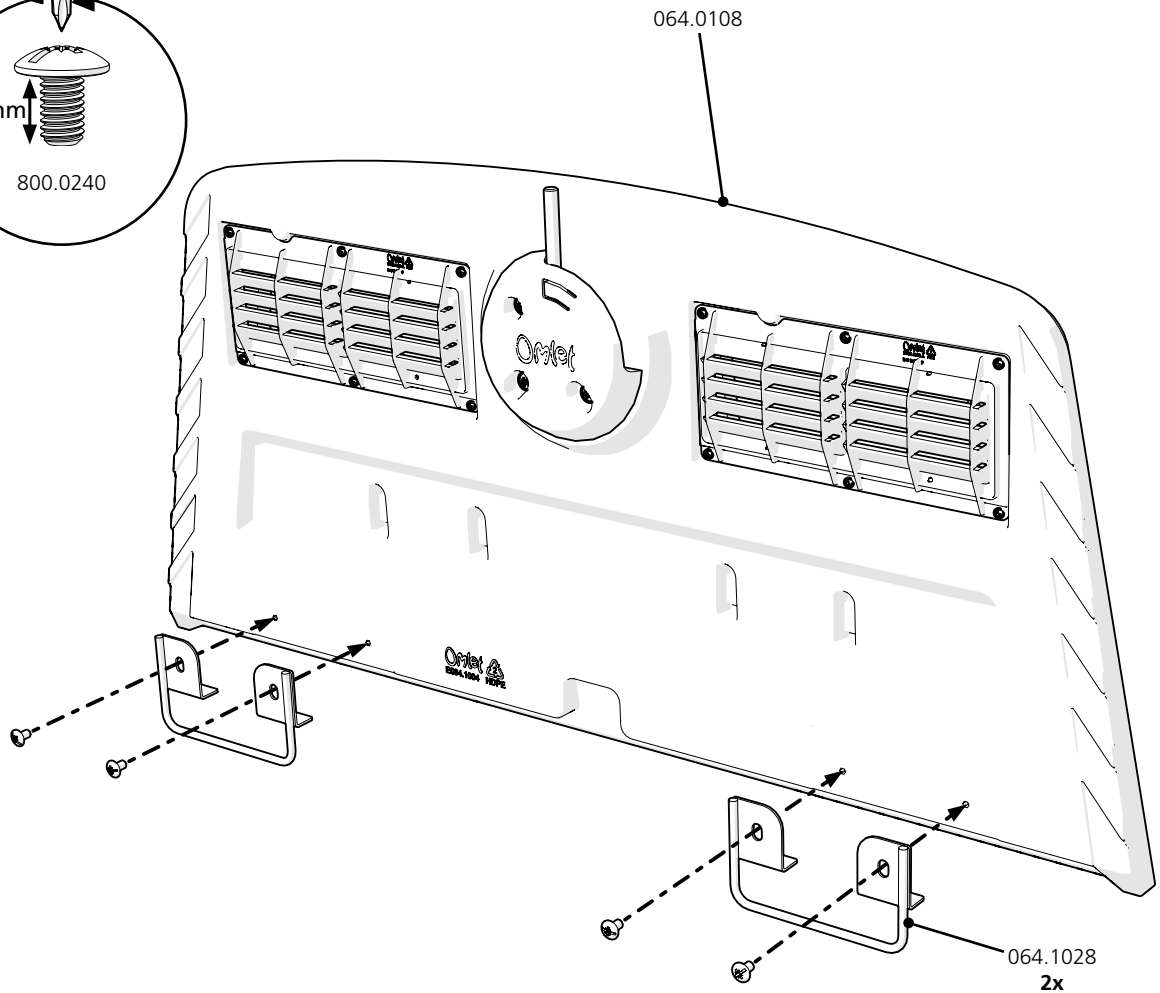
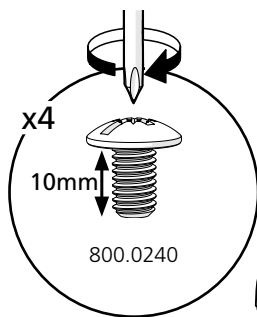
37



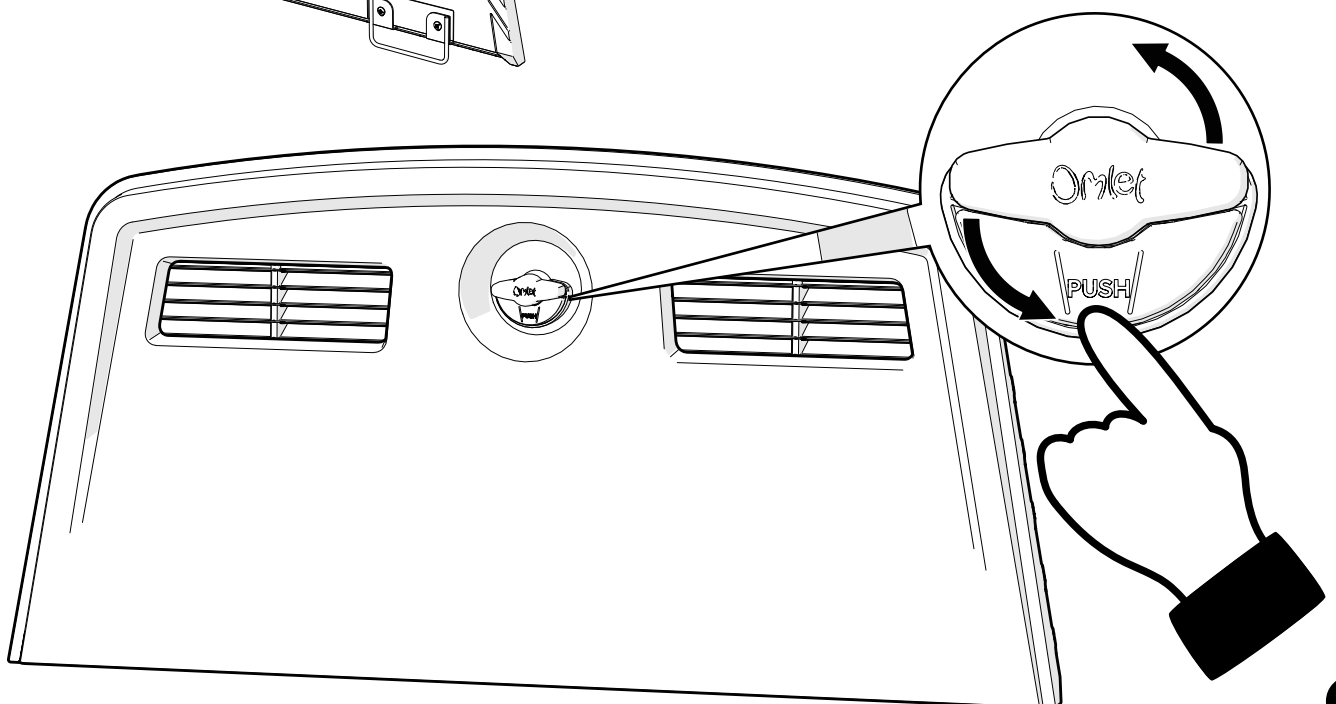
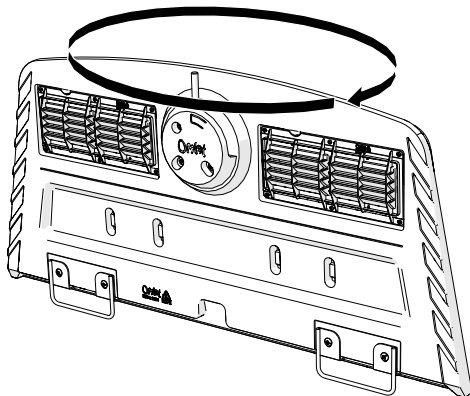
38



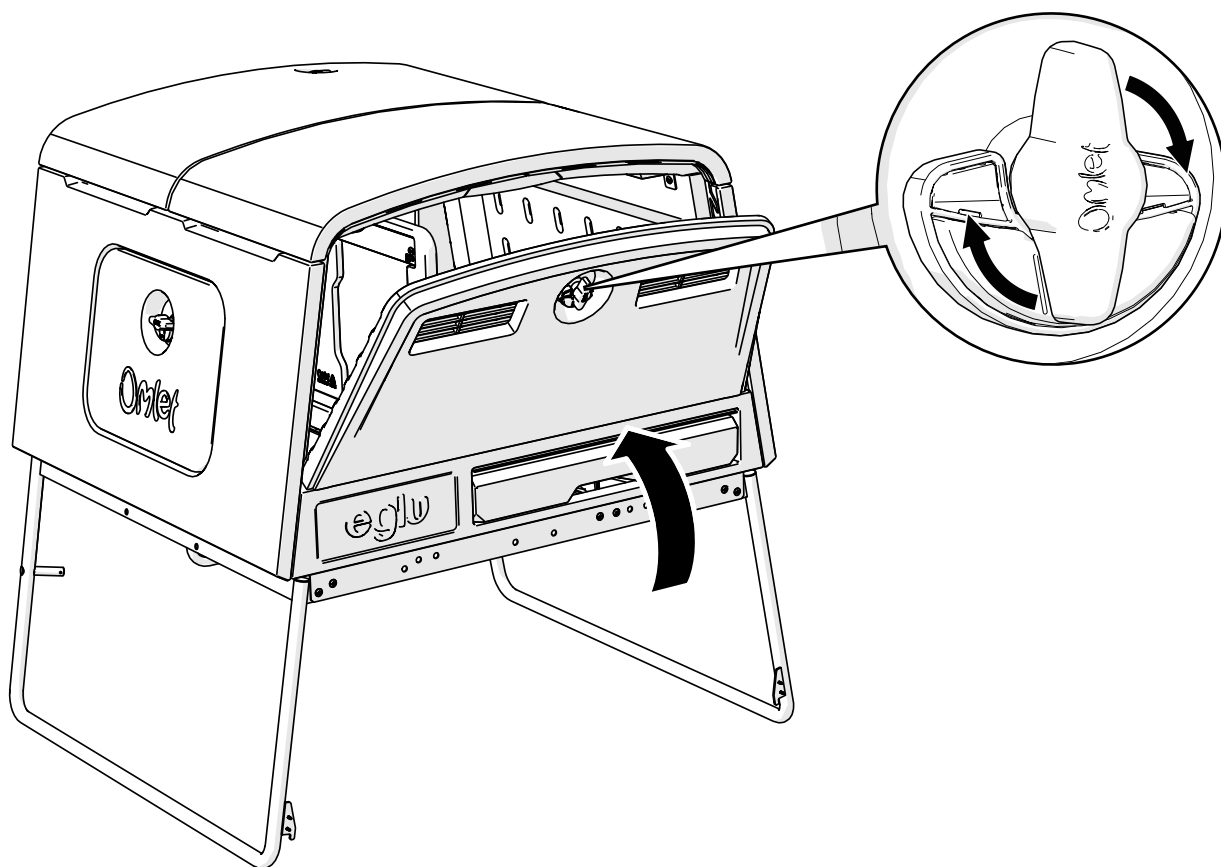
39



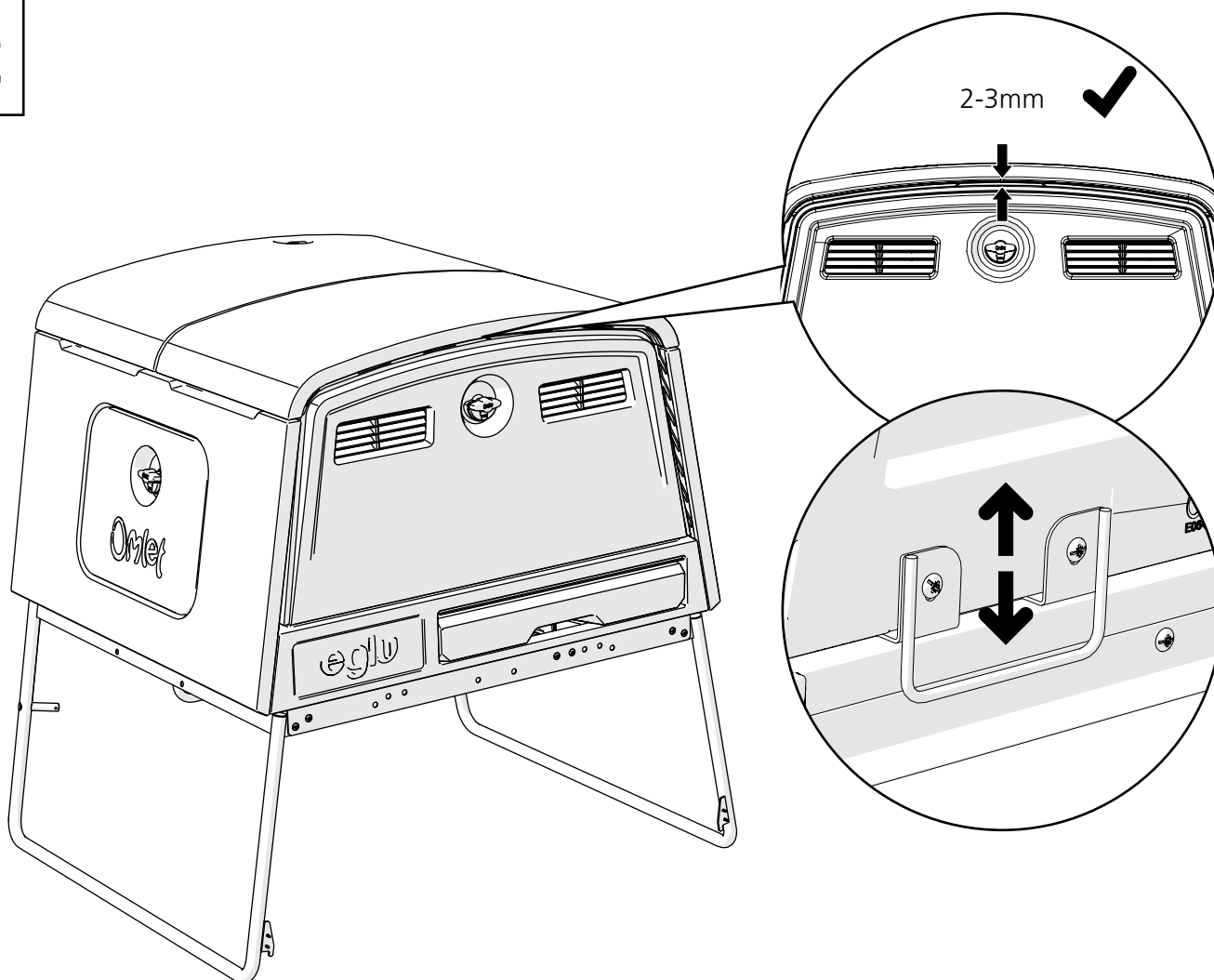
40

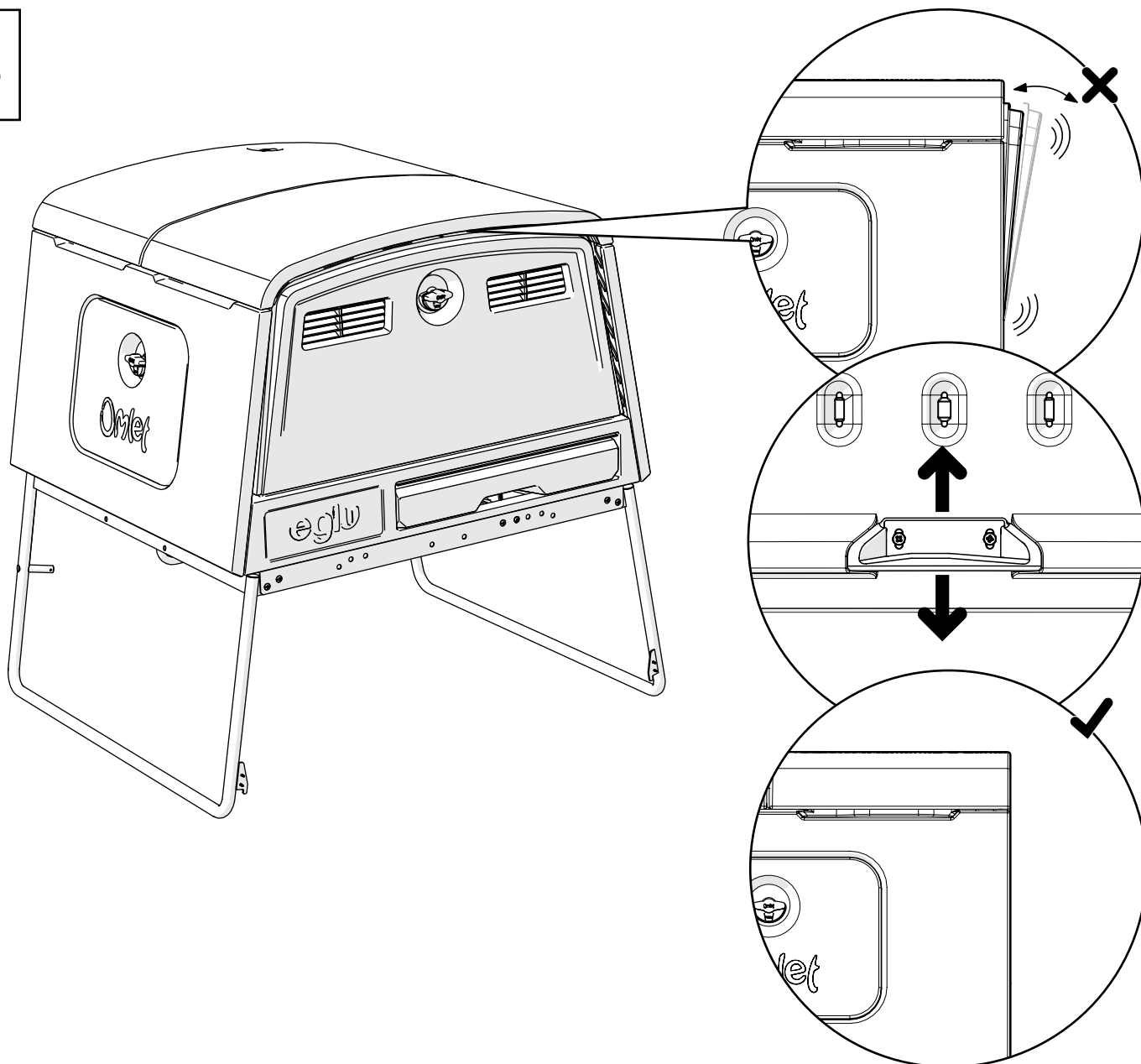


41

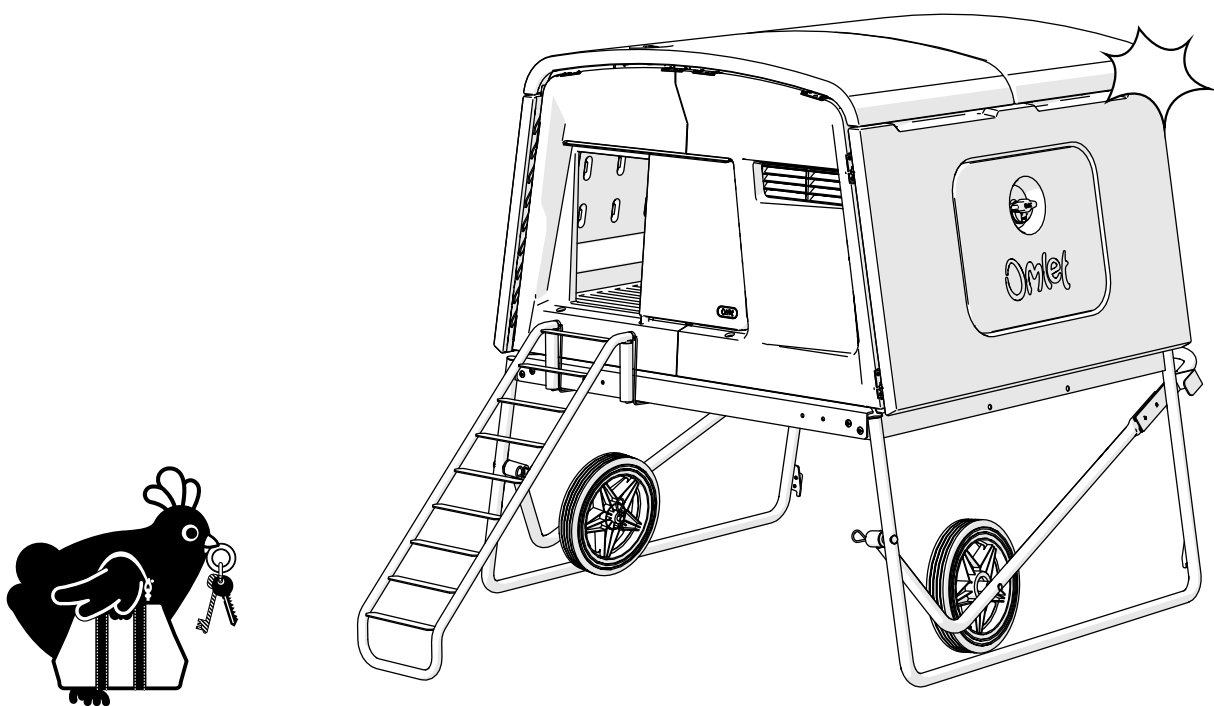


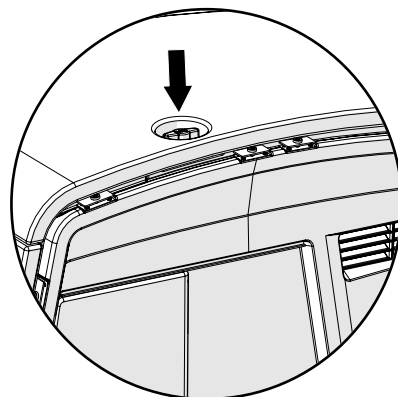
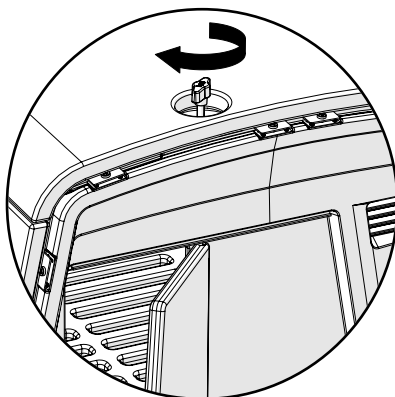
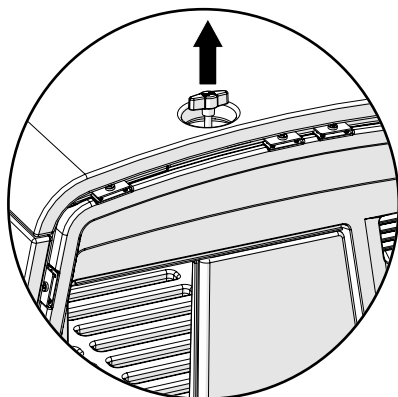
42



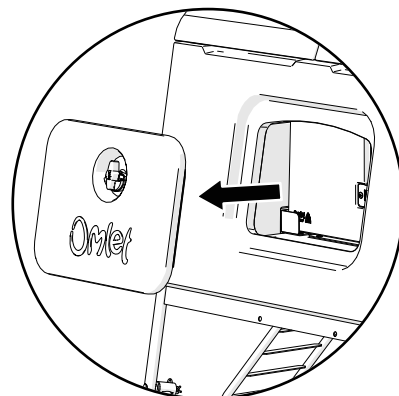
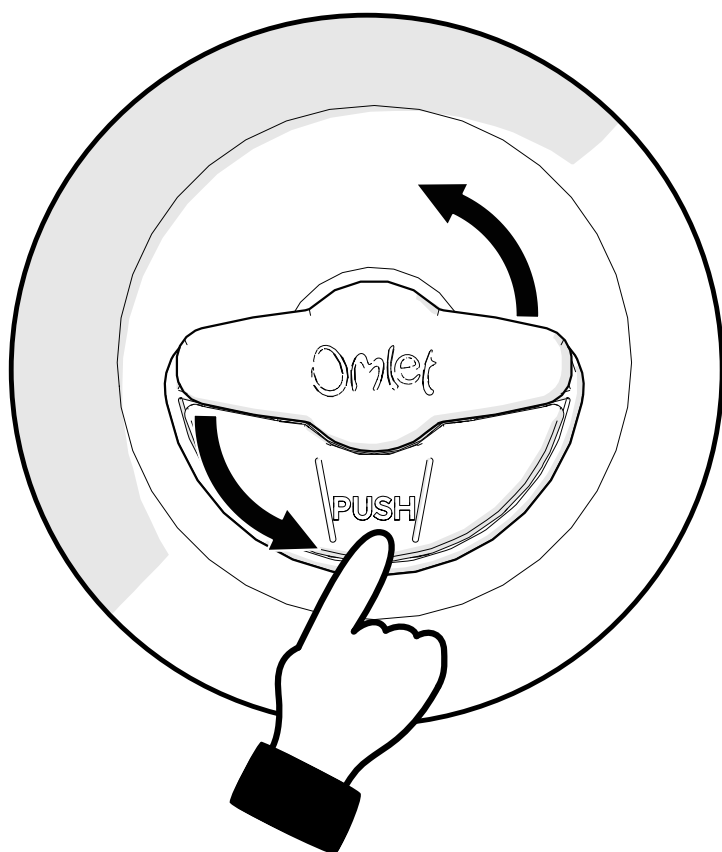


That's it! Congratulations, your new Eglu Cube is now ready for chickens.

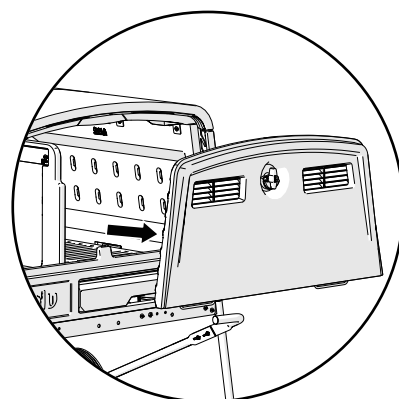




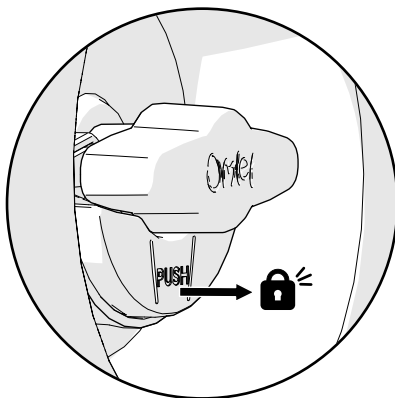
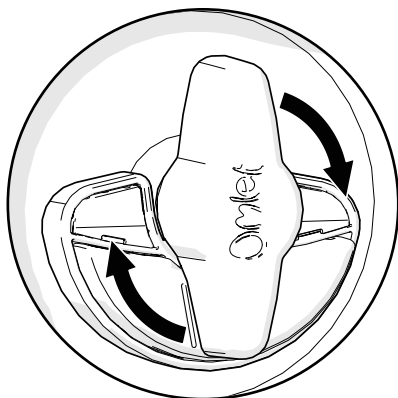
To unlock the T-handle, push the button and twist the handle at the same time.



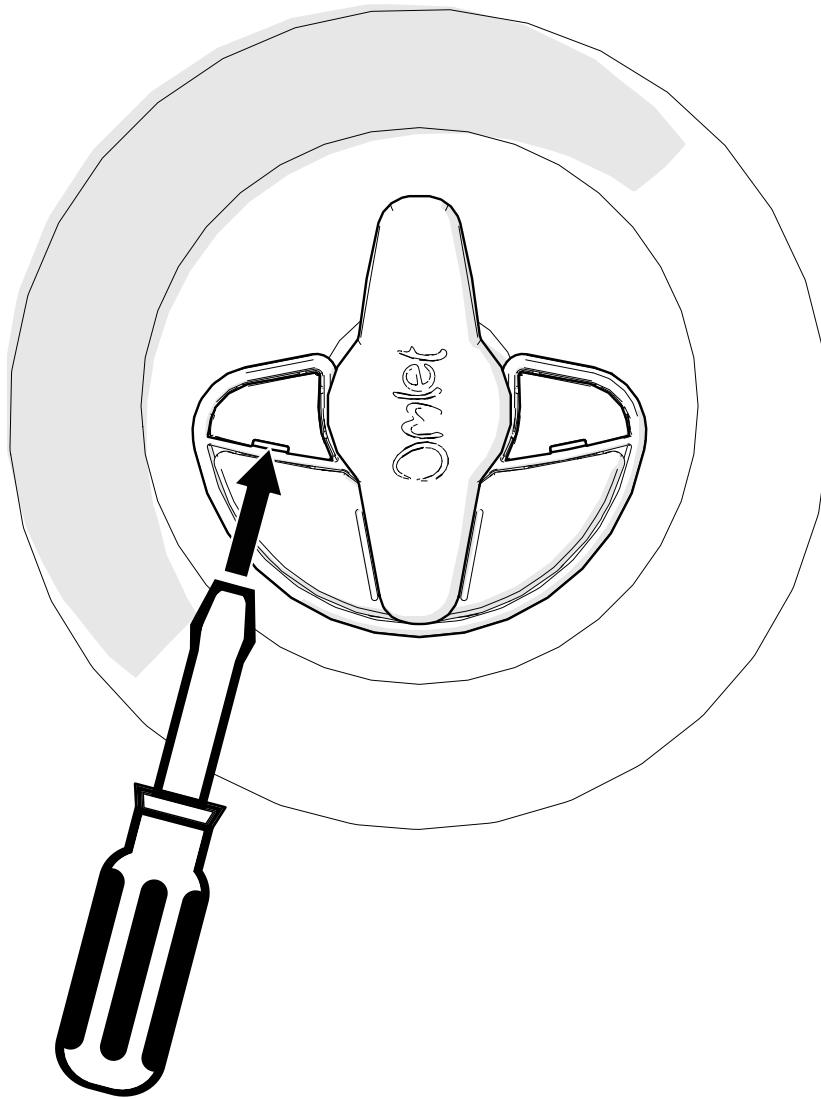
or
oder · ou · of · oppure · o · eller



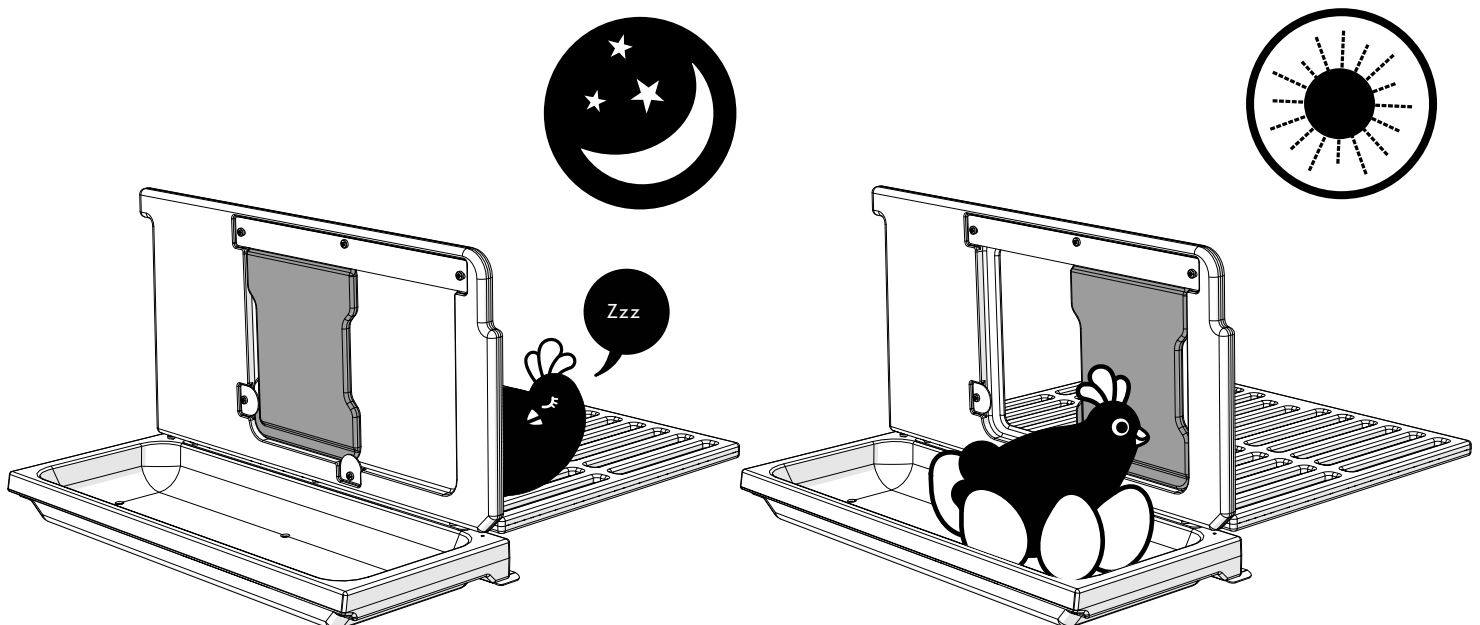
To lock the T-Handle, turn it to its horizontal position and ensure the push button springs up.

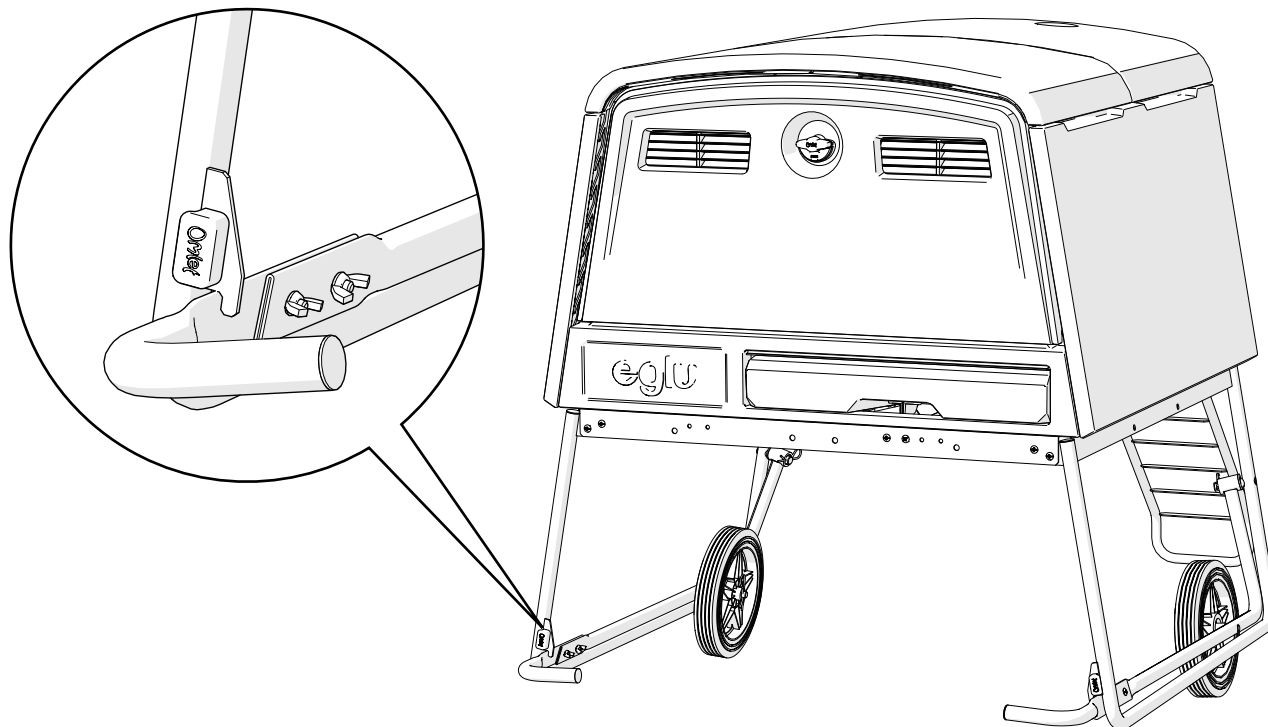
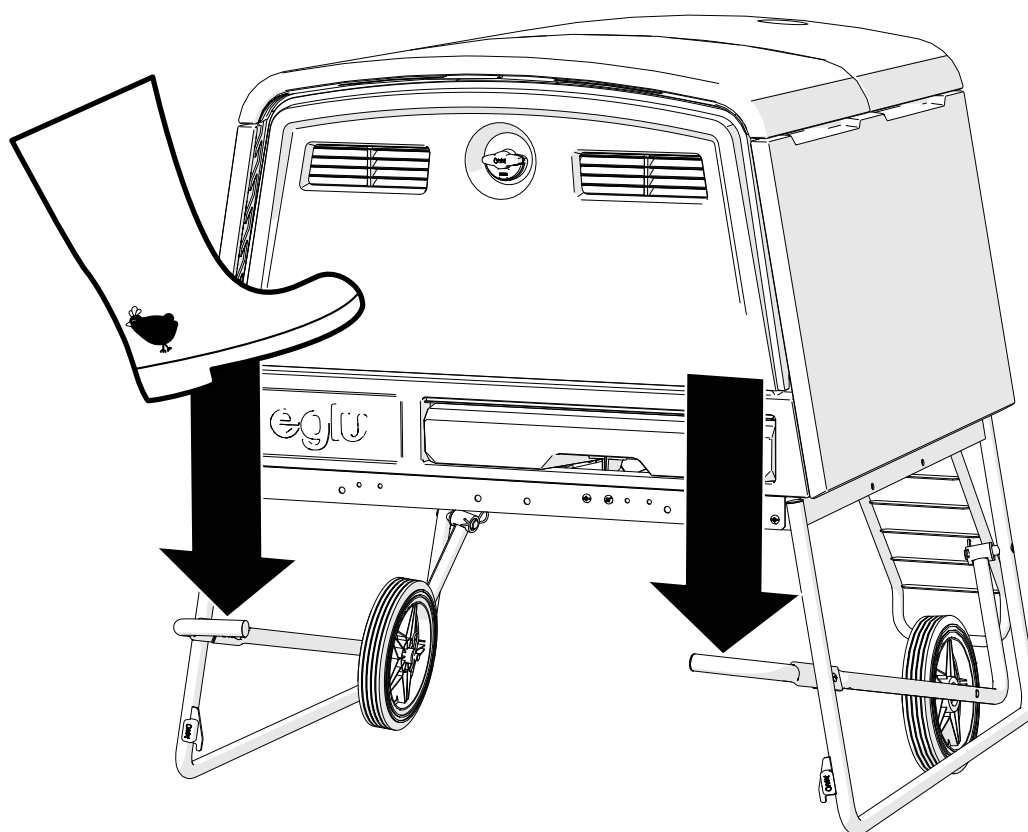


If you need to remove the lock, use a flat head screwdriver to lift out the screw caps (810.0443 + 810.0444).



Partition: The partition is used to keep your chickens in the roosting area at night

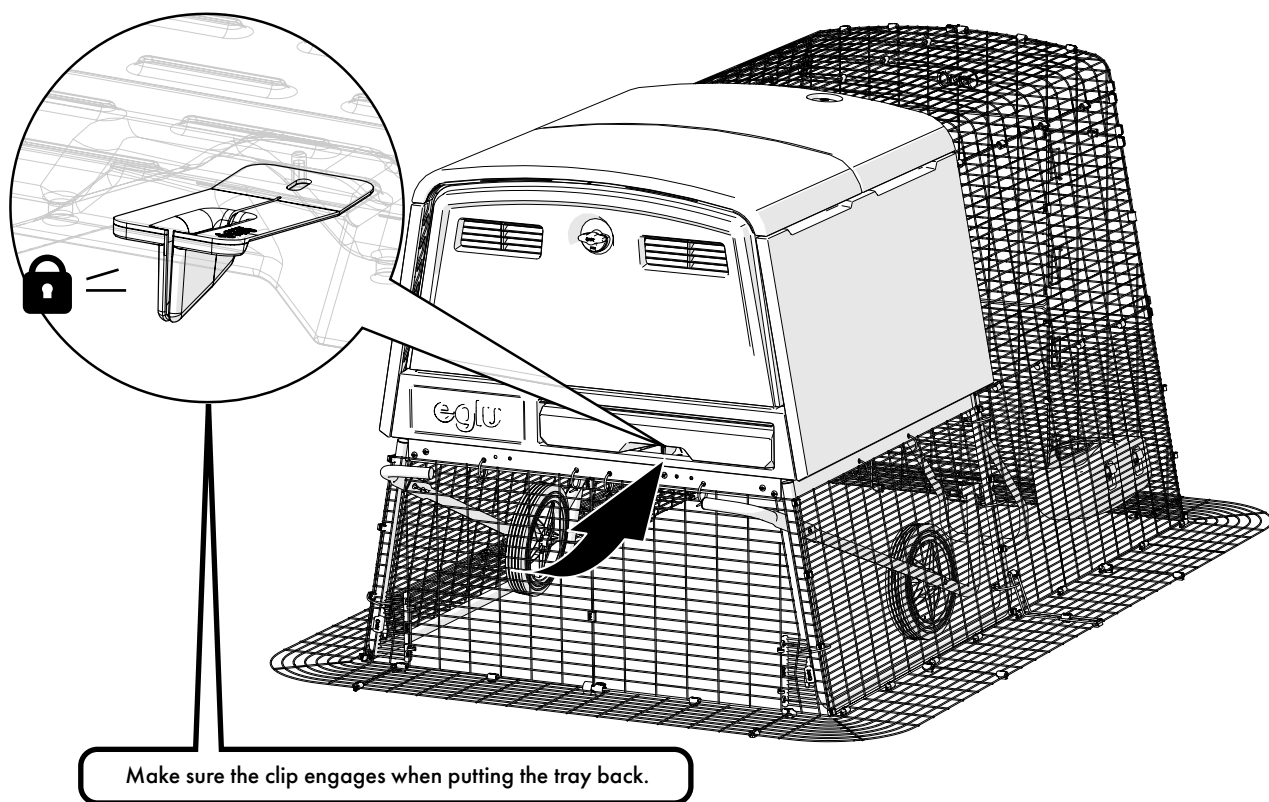
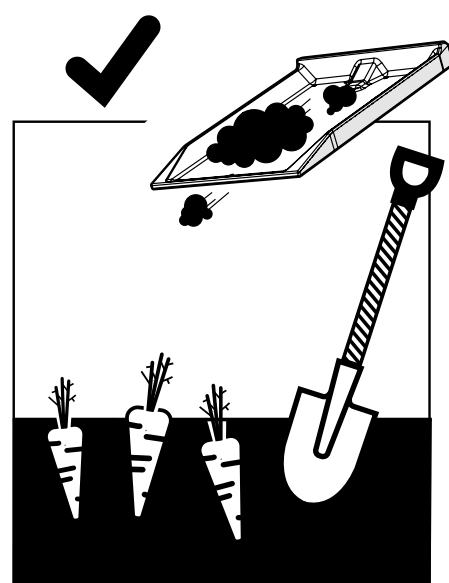
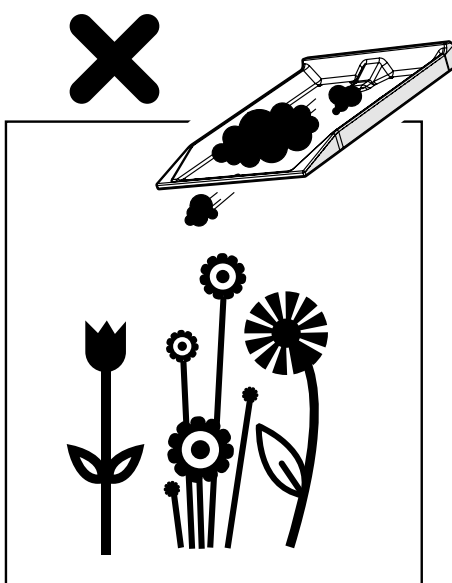
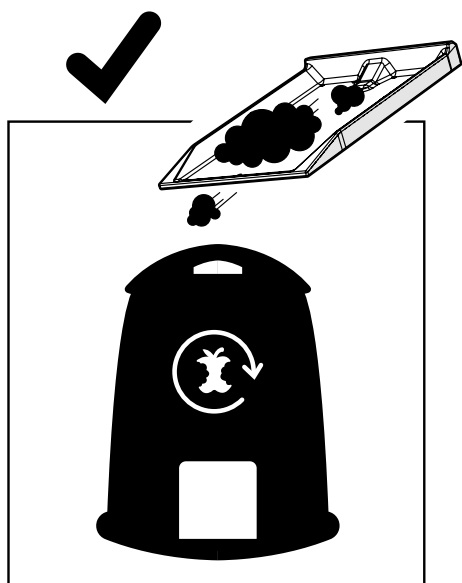
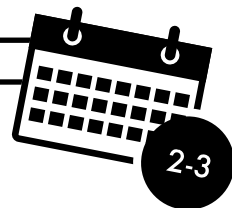




Deep Clean



Empty Droppings Tray



DOs

Collect and enjoy your eggs everyday. Leaving eggs in the Eglu Cube can cause your chicken to go broody and not lay any eggs for a few weeks.

Make sure your chickens always have access to food and clean water.

Let your chickens out of the Eglu Cube everyday. If you are away, then leave the Eglu Cube door open so that the chickens can get out into the run in the morning. Not letting your chickens out will lead to distressed chickens and could lead to terminal overheating.

Supervise children when they are using the Eglu Cube or interacting with the chickens.

Take extra care when using the lawn mower around the 'skirt' of the run. Without care you will damage the 'skirt' with the lawn mower.

Wash your hands thoroughly after coming into contact with the Eglu Cube or chickens.

Be aware that chickens have sharp beaks and claws and they may peck or scratch at something that resembles food or looks interesting to them. Small shiny things are especially attractive to chickens.

Check that the run door and rear panel are well secured. If they are not secure your chickens are at greater risk of escape and predators.

This product contains small parts that can be a choking hazard. Keep them away from your pets and children.

DON'Ts

Do not sit or climb on the run. This is not only dangerous but can lead to the run being damaged.

Do not let children inside the run or Eglu Cube. This could lead to them getting stuck.

Do not leave the door of the run open while your chickens roost at night. This will compromise your chickens safety by allowing predators to get into the run.

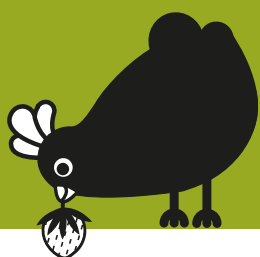
Do not keep the Eglu Cube on uneven ground as this will make the run less secure. It can also cause the run 'skirt' to be a tripping hazard.

Do not use bleach, solvents or strong detergent to clean the Eglu Cube. They could damage the plastic.

Do not keep the Eglu Cube near sources of ignition, such as a bonfire or barbecue, because they could set the Eglu Cube on fire.

Do not use the Eglu Cube to house animals other than chickens. It has not been designed for any other purpose.

Do not keep more than 6 heavy breeds, 8 medium sized breeds or 10 small breeds in the Eglu Cube with the standard run and extension.



Omlet®



Please Reuse,
Compost,
Recycle.



© Copyright Omlet Ltd. 2023
Design Registered, Patent Pending
Eglu is a Registered Trademark of Hebe Studio Ltd.
Omlet is a Registered Trademark of Hebe Studio Ltd.
820.1399 Instruction Manual Master 27/03/2023